



Critical Cover[®]

*Dedicated to the Protection of
People, Products & Environments*

AlphaProTech
INCORPORATED



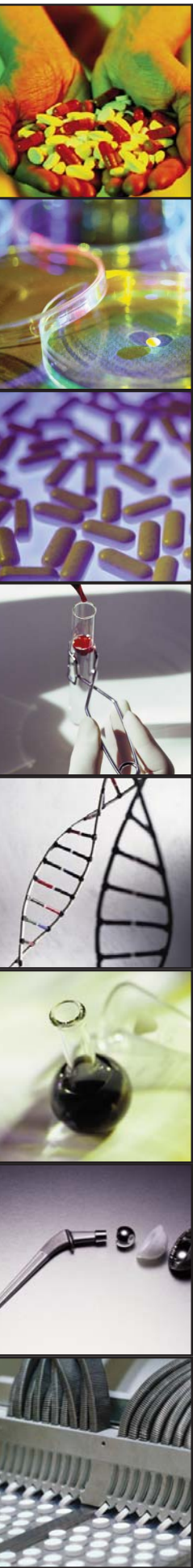
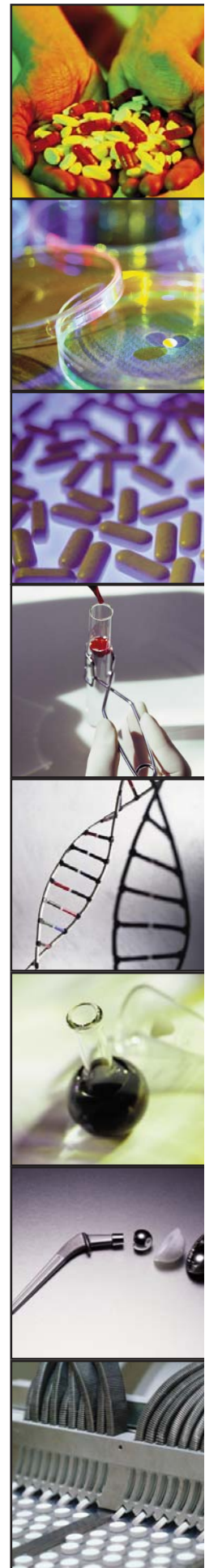


Table of Contents

| | Page | Page | |
|---------------------------------|-------|--|-------|
| Critical Cover® Garments | | | |
| Coveralls | 5-10 | Shoe & Boot Covers | 27-36 |
| ChemTech® | 6 | UltraGrip™ Shoe Covers | 28 |
| Microbreathe™ | 7 | MaxGrip® Shoe Covers | 29 |
| ComforTech® | 8 | UltraGrip™ Boot Covers | 30 |
| AlphaGuard® | 9 | AquaTrak® Shoe & Boot Covers | 31-32 |
| GenPro® | 10 | SureGrip™ Shoe Covers | 33-34 |
| | | GenPro® Shoe & Boot Covers | 35 |
| | | CPE Shoe Covers | 36 |
| | | NaviTrak® Shoe Covers | 36 |
| Frocks | 11-15 | | |
| Microbreathe™ | 12 | | |
| ComforTech® | 13 | | |
| AlphaGuard® | 14 | | |
| GenPro® | 15 | | |
| Lab Coats | 16-20 | | |
| Microbreathe™ | 17 | | |
| ComforTech® | 18 | | |
| AlphaGuard® | 19 | | |
| GenPro® | 20 | | |
| Gowns | 21-22 | | |
| BarrierTech® | 21 | | |
| GenPro® | 22 | | |
| Scrub Shirts & Pants | 23 | | |
| AlphaGuard® | 23 | | |
| Sleeve Protectors | 24 | | |
| ChemTech® | 24 | | |
| ComforTech® | 24 | | |
| GenPro® | 24 | | |
| Hoods | 25 | | |
| ComforTech® | 25 | | |
| Miscellaneous | 26 | | |
| GenPro® Bouffants | 26 | | |
| GenPro® Beard Covers | 26 | | |
| | | Garment Packaging | 37 |
| | | | |
| | | Critical Cover® Facemasks & Shields | |
| | | Facemasks | 38-45 |
| | | PFL® Masks | 39 |
| | | PFL® Laser Mask | 40 |
| | | N-95 Particulate Respirator | 40 |
| | | CoolOne™ Masks | 41 |
| | | ShieldMate® Mask and Shield | 42 |
| | | Combo® Mask and Shield | 42 |
| | | AlphaAir® Masks | 43 |
| | | Microbreathe™ Mask | 43 |
| | | AlphaGuard® Mask | 44 |
| | | MVT Masks | 44 |
| | | Comfort™ Veil | 45 |
| | | | |
| | | Coverall® Face Shields | 45 |
| | | Full Face Shield | 45 |
| | | Half Face Shield | 45 |
| | | | |
| | | Facemask Packaging | 46 |
| | | | |
| | | Dimensions Charts | 47-50 |
| | | | |
| | | Seam Construction | 50 |
| | | | |
| | | Sizing Chart | 50 |



Alpha Pro Tech. . .

Protecting People, Products and Environments™

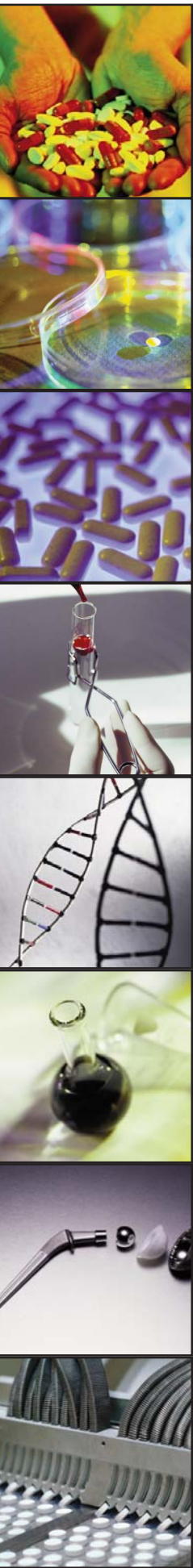
Alpha Pro Tech is a leader in the disposable protective garment market and is committed to supplying high value and superior performance Critical Cover® apparel designed to protect people, product and manufacturing environments.

We are dedicated to producing the highest quality products possible and we are continually striving to maintain our leadership position with new and innovative product design and development. We are always seeking new technology in every area of our company. The depth of our design and manufacturing capabilities allows us to quickly create products to meet evolving market requirements and customer needs. Through this commitment we support our customer's efforts to optimize their organizations productivity and profitability.

The goal in the design and manufacture of all Critical Cover General Use Garments is to keep the wearer cool, clean and comfortable and to provide the right level of protection for the wearer and your facility. To achieve this we offer a comprehensive selection of materials and garment designs to meet a wide range of application requirements and budgets. Our materials are ultra clean, durable and offer the wearer a greater comfort level than comparative materials on the market today.

Alpha Pro Tech is structured to maintain a strong customer focus, striving to meet every need: quality, price, reliability and service. Make Alpha Pro Tech your first source to protect your people, products and environments.

Our products are latex-free, except where noted.



Critical Cover® Coveralls

Versatile Designs to Meet All Your Needs

Material Options

- ChemTech® Material
- Microbreathe™ Material
- ComforTech® Material
- AlphaGuard® Material
- GenPro® Material

Seam Options

- Serged
- Bound

Wrist Options

- Elastic

Boot Options

- AquaTrak® Boot Covers
- UltraGrip™ Boot Covers

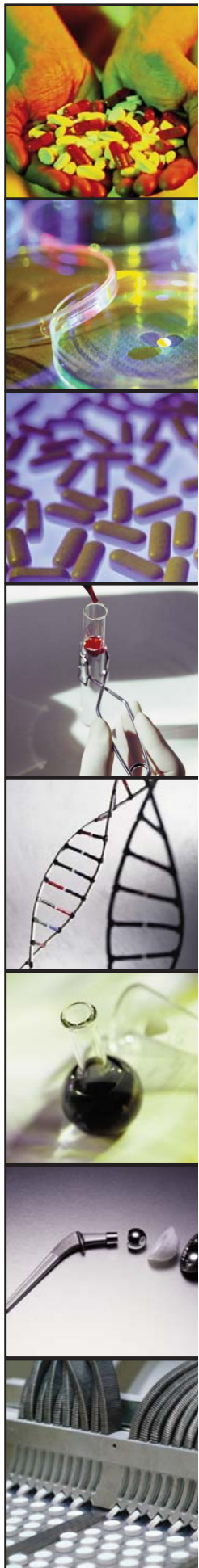
Optional Hood

Optional Elastic Back

Ankle Options

- Elastic

*Not all coveralls are available with all options.

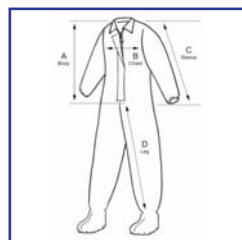


Critical Cover® ChemTech® Coveralls

Safety Barrier from the Inside Out

Features & Benefits: Our ChemTech line of apparel offers excellent chemical barrier properties in addition to liquid and particle holdout. ChemTech is designed with a safety barrier on the inside for an added measure of protection. These ChemTech coveralls have bound seams for additional protection.

Construction Details: Protective flap over zipper, bound seams.



Protective flap over zipper,
elastic wrist, attached boots,
bound seams, yellow
12/case

| Part No. | Size |
|-------------|------|
| CVB-K4210-2 | M |
| CVB-K4210-3 | L |
| CVB-K4210-4 | XL |
| CVB-K4210-5 | 2X |
| CVB-K4210-6 | 3X |
| CVB-K4210-7 | 4X |



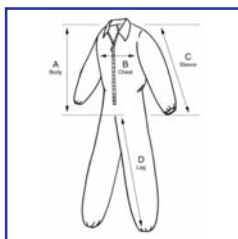
Chemical Barrier

Critical Cover® Microbreathe™ Coveralls

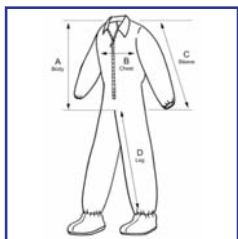
Suitable for Use in Controlled Environments

Features & Benefits: Choose Microbreathe coveralls for their outstanding protection, breathability and superior barrier properties. The strong, flexible Microbreathe fabric is liquid resistant, yet exhibits an excellent vapor transmission rate (breathability). With a filtration efficiency of 99.9%, low particulate levels and static dissipative characteristics, Microbreathe products protect your sensitive output and processes.

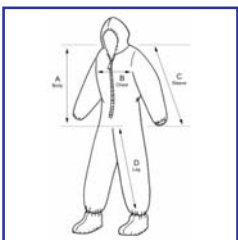
Construction Details: Four styles available: bound seams for superior particle holdout, attached hood and AquaTrak® boots version for added slip and fall protection, attached UltraGrip™ boots for premium slip and fall protection, and our base design with zipper front with elastic wrist and ankle.



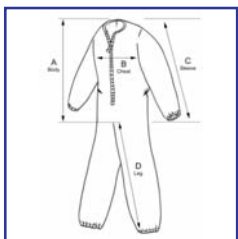
Elastic wrist, ankle & back,
serged seams, white
25/case



Elastic wrist & ankle, UltraGrip™ boots,
serged seams, white
25/case



Elastic hood, wrist, ankle & back,
AquaTrak® boots, serged seams, white
25/case



Elastic wrist, ankle & back,
bound collar, bound seams, white
25/case

| Part No. | Size |
|------------|------|
| CV-04032-1 | S |
| CV-04032-2 | M |
| CV-04032-3 | L |
| CV-04032-4 | XL |
| CV-04032-5 | 2X |
| CV-04032-6 | 3X |
| CV-04032-7 | 4X |
| CV-04032-8 | 5X |

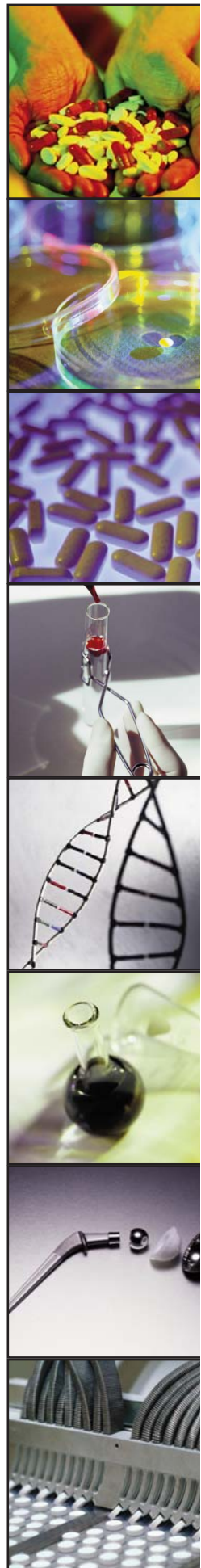
| Part No. | Size |
|------------|------|
| CV-04522-2 | M |
| CV-04522-3 | L |
| CV-04522-4 | XL |
| CV-04522-5 | 2X |
| CV-04522-6 | 3X |

| Part No. | Size |
|------------|------|
| CV-04CB2-2 | M |
| CV-04CB2-3 | L |
| CV-04CB2-4 | XL |
| CV-04CB2-5 | 2X |
| CV-04CB2-6 | 3X |

| Part No. | Size |
|------------|------|
| CV-04632-1 | S |
| CV-04632-2 | M |
| CV-04632-3 | L |
| CV-04632-4 | XL |
| CV-04632-5 | 2X |
| CV-04632-6 | 3X |
| CV-04632-7 | 4X |
| CV-04632-8 | 5X |



Barrier Protection

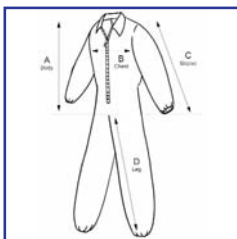


Critical Cover® ComforTech® Coveralls

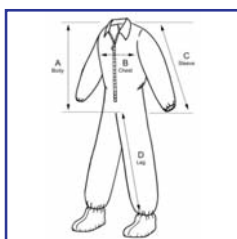
Suitable for Use in Controlled Environments

Features & Benefits: ComforTech coveralls provide superior protection without sacrificing comfort. They are constructed of an innovative, lightweight and durable material that delivers excellent protection against particles, biologicals and many fluids. The ComforTech material exhibits a low particle count and has a 99.9% filtration efficiency to help protect your environment from contamination. A breathable and efficient material, ComforTech also has static dissipative properties for those applications where electro-static dissipative (ESD) protection is required.

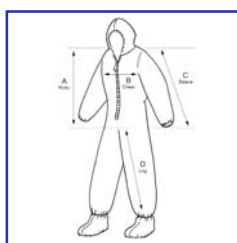
Construction Details: Three styles of ComforTech coveralls are available: attached AquaTrak® boots for added slip and fall protection, our attached hood and boot version and our base design with elastic wrist and ankle and zipper closure. All serged seam design.



Elastic wrist & ankle,
serged seams, white
25/case



Elastic wrist, ankle & back,
AquaTrak® boots,
serged seams, white
25/case



Elastic hood, wrist & ankle,
AquaTrak® boots,
serged seams, white
25/case

| Part No. | Size |
|------------|------|
| CV-J4022-1 | S |
| CV-J4022-2 | M |
| CV-J4022-3 | L |
| CV-J4022-4 | XL |
| CV-J4022-5 | 2X |
| CV-J4022-6 | 3X |
| CV-J4022-7 | 4X |
| CV-J4022-8 | 5X |

| Part No. | Size |
|------------|------|
| CV-J4832-1 | S |
| CV-J4832-2 | M |
| CV-J4832-3 | L |
| CV-J4832-4 | XL |
| CV-J4832-5 | 2X |
| CV-J4832-6 | 3X |
| CV-J4832-7 | 4X |
| CV-J4832-8 | 5X |

| Part No. | Size |
|------------|------|
| CV-J4C92-2 | M |
| CV-J4C92-3 | L |
| CV-J4C92-4 | XL |
| CV-J4C92-5 | 2X |
| CV-J4C92-6 | 3X |
| CV-J4C92-7 | 4X |
| CV-J4C92-8 | 5X |



Innovative

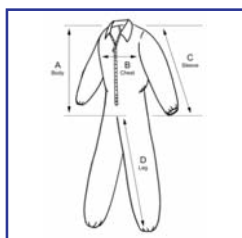
Critical Cover® AlphaGuard® Coveralls

Unique Blend of Strength, Comfort and Protective Qualities – Suitable for Use in Controlled Environments

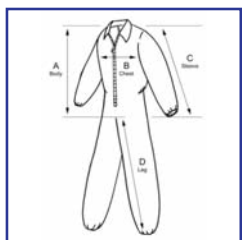
Features & Benefits: AlphaGuard is the result of leading-edge technologies and brings to market a unique blend of physical properties that provides both the user and your production environment with a comfortable and efficient garment. AlphaGuard is a very breathable and comfortable material for the wearer while providing a high level of filtration efficiency for your environment. A low particle count adds another measure of environmental protection for your processes.

AlphaGuard material is fluid repellent but not recommended for use with chemicals. The static dissipative material is recommended for those applications where electro-static dissipative (ESD) protection is required. An elastic back gathers the loose material in an effort to eliminate snags while reducing the billowing effect that can release particles into the environment.

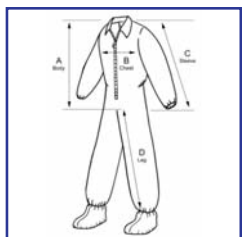
Construction Details: Two styles and two colors (white & blue) of AlphaGuard coveralls are available: with attached AquaTrak boots for added slip and fall protection and our standard coverall with elastic wrists, ankles and back. Both configurations are serged seams.



Elastic wrist, ankle & back, serged seams, white
25/case



Elastic wrist, ankle & back, serged seams, blue
25/case



Elastic wrist, ankle & back, AquaTrak® boots, serged seams, white
25/case

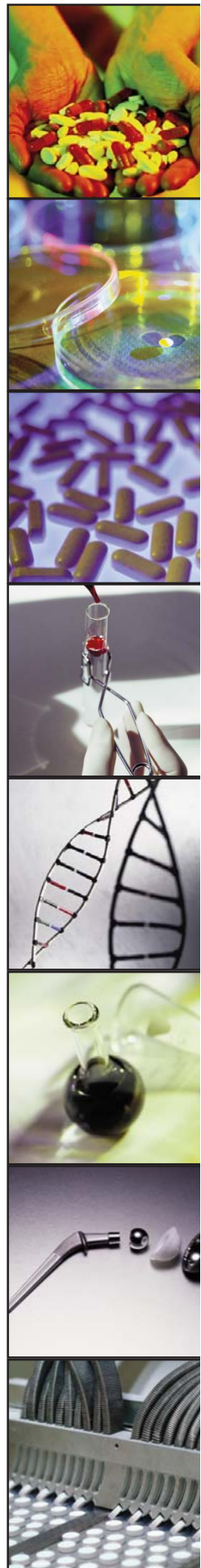
| Part No. | Size | Color |
|------------|------|-------|
| CV-74032-2 | M | White |
| CV-74032-3 | L | White |
| CV-74032-4 | XL | White |
| CV-74032-5 | 2X | White |
| CV-74032-6 | 3X | White |
| CV-74032-7 | 4X | White |
| CV-74032-8 | 5X | White |

| Part No. | Size | Color |
|------------|------|-------|
| CV-84032-1 | S | Blue |
| CV-84032-2 | M | Blue |
| CV-84032-3 | L | Blue |
| CV-84032-4 | XL | Blue |
| CV-84032-5 | 2X | Blue |
| CV-84032-6 | 3X | Blue |
| CV-84032-7 | 4X | Blue |
| CV-84032-8 | 5X | Blue |

| Part No. | Size | Color |
|------------|------|-------|
| CV-74832-1 | S | White |
| CV-74832-2 | M | White |
| CV-74832-3 | L | White |
| CV-74832-4 | XL | White |
| CV-74832-5 | 2X | White |
| CV-74832-6 | 3X | White |
| CV-74832-7 | 4X | White |
| CV-74832-8 | 5X | White |



Ultra Soft

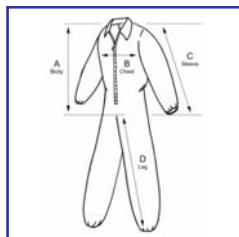


Critical Cover® GenPro® Coveralls

Basic Protection for Non-Hazardous Environments

Features & Benefits: GenPro coveralls are ideal for workers and visitors in non-hazardous environments. The lightweight, durable material lets you stay clean and comfortable all day while providing a limited barrier to particulates and contamination. The elastic back minimizes loose material and reduces the hazard of snagging on equipment.

Construction Details: Standard coverall with elastic wrists, ankles and back, serged seams.



Elastic wrist,
ankle & back,
serged seams, white
25/case

| Part No. | Size |
|------------|------|
| CV-14032-1 | S |
| CV-14032-2 | M |
| CV-14032-3 | L |
| CV-14032-4 | XL |
| CV-14032-5 | 2X |
| CV-14032-6 | 3X |
| CV-14032-7 | 4X |
| CV-14032-8 | 5X |



Economical

Critical Cover® Frocks

Design Choices to Enhance Safety and Performance

Material Options

- Microbreathe™ Material
- ComforTech® Material
- AlphaGuard® Material
- GenPro® Material

Seam Options

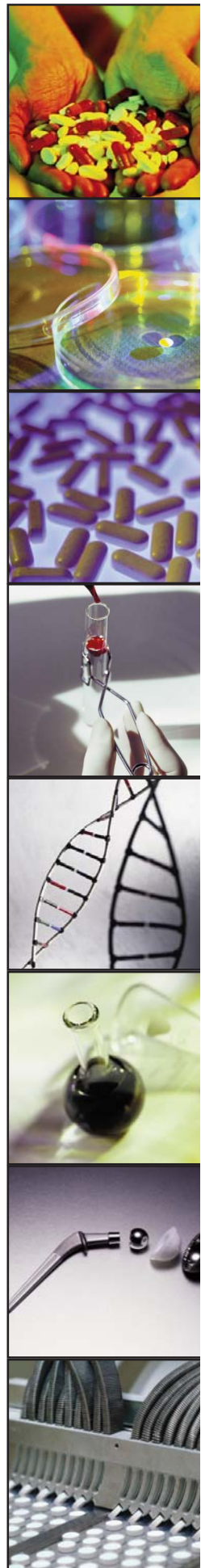
- Serged Seams



Closure Options

- Snap Close
- Zip Close

*Not all frocks are available with all options.



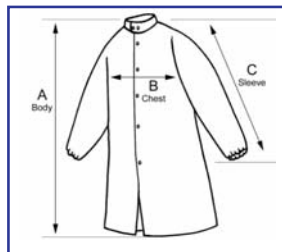
Critical Cover® Microbreathe™ Frocks

Suitable for Use in Controlled Environments

Features & Benefits: The Microbreathe fabric has excellent breathability, filtration efficiency and the ability to act as a barrier to particles, biologicals, and many fluids. The ultra clean material has a filtration efficiency of 99.9% to prevent contamination on the wearer from passing through to your product or into your environment. Together, the physical properties of Microbreathe provide you with a garment that is comfortable to wear while providing a high degree of particle holdout.

The Microbreathe frock with a mandarin style snap collar provides additional coverage of the chest and neck area. This feature reduces potential environmental contamination while increasing coverage for the wearer. The mandarin collar is proportioned by size for a comfortable fit. Our Microbreathe frocks are treated with an anti-stat application for those environments where electro-static dissipative (ESD) protection is required.

Construction Details: Our Microbreathe frocks feature serged seams, elastic wrists, snap mandarin collar and a raglan sleeve design for additional comfort. No pockets.



Raglan sleeve, elastic wrist,
snap collar, snap close,
serged seams, white
25/case

| Part No. | Size |
|------------|------|
| FK-52121-1 | S |
| FK-52121-2 | M |
| FK-52121-3 | L |
| FK-52121-4 | XL |
| FK-52121-5 | 2X |
| FK-52121-6 | 3X |
| FK-52121-7 | 4X |
| FK-52121-8 | 5X |



Breathable

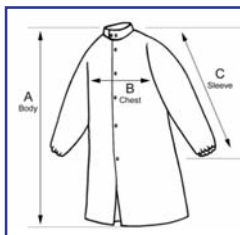
Critical Cover® ComforTech® Frocks

Suitable for Use in Controlled Environments

Features & Benefits: ComforTech frocks provide a 99.9% filtration efficiency rate and protect wearers from light chemical splash, particles and biologicals while keeping them cool and comfortable. A breathable and lightweight garment, the ComforTech frock is also durable and will effectively meet your controlled environment needs.

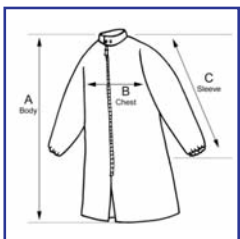
A mandarin style snap collar adds style and comfort while providing additional coverage for the chest and neck area. Our ComforTech frocks are cut and sewn to an appropriate length to ensure full coverage and with the nylon zipper option, the ComforTech frock adds another level of particle holdout and protection. Our ComforTech frocks are treated with an anti-stat application for those environments where electro-static dissipative (ESD) protection is required.

Construction Details: Our ComforTech frocks feature serged seams and elastic wrists, with a snap mandarin collar. No pockets.



Raglan sleeve, elastic wrist,
snap collar, snap close,
serged seams, white
25/case

| Part No. | Size |
|------------|------|
| FK-J2121-1 | S |
| FK-J2121-2 | M |
| FK-J2121-3 | L |
| FK-J2121-4 | XL |
| FK-J2121-5 | 2X |
| FK-J2121-6 | 3X |
| FK-J2121-7 | 4X |
| FK-J2121-8 | 5X |

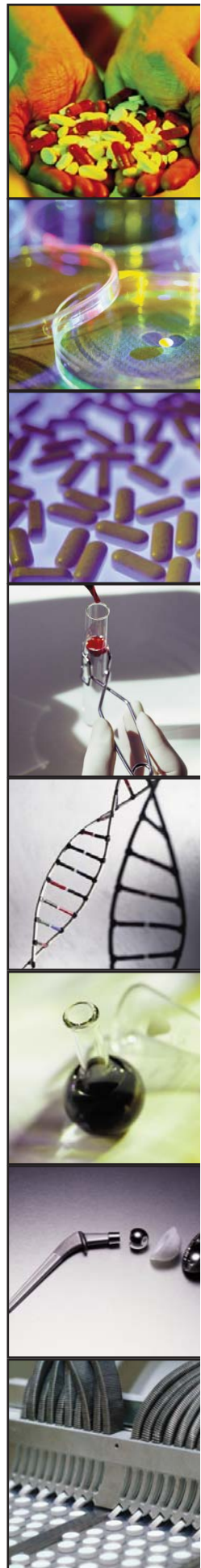


Raglan sleeve, elastic wrist,
snap collar, zip close,
serged seams, white
25/case

| Part No. | Size |
|------------|------|
| FK-J2141-1 | S |
| FK-J2141-2 | M |
| FK-J2141-3 | L |
| FK-J2141-4 | XL |
| FK-J2141-5 | 2X |
| FK-J2141-6 | 3X |
| FK-J2141-7 | 4X |



Durable



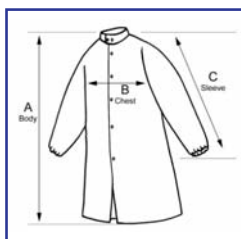
Critical Cover® AlphaGuard® Frocks

Balancing Comfort and Protection

Features & Benefits: Meet your personnel's breathability and comfort requirements with high performance AlphaGuard frocks. The low particle count AlphaGuard material offers one of the highest levels of breathability without compromising filtration efficiency. The fluid repellent AlphaGuard material is clean, durable, soft and treated with an anti-stat application for those environments where electro-static dissipative (ESD) protection is required.

Our AlphaGuard frocks are designed with a five-snap closure that provides full coverage and minimizes gaps. The length is appropriately adjusted to size to ensure additional coverage. A stylish, non-binding mandarin collar is tailored for maximum comfort and added protection. Our AlphaGuard frocks are available in both blue and white.

Construction Details: Our AlphaGuard frocks feature serged seams, elastic wrists, snap mandarin collar and a raglan sleeve design for additional comfort. No pockets.



Raglan sleeve, elastic wrist,
snap collar, snap close,
serged seams
30/case

| Part No. | Size | Color |
|------------|------|-------|
| FK-32122-1 | S | White |
| FK-32122-2 | M | White |
| FK-32122-3 | L | White |
| FK-32122-4 | XL | White |
| FK-32122-5 | 2X | White |
| FK-32122-6 | 3X | White |
| FK-32122-7 | 4X | White |
| FK-31122-1 | S | Blue |
| FK-31122-2 | M | Blue |
| FK-31122-3 | L | Blue |
| FK-31122-4 | XL | Blue |
| FK-31122-5 | 2X | Blue |
| FK-31122-6 | 3X | Blue |
| FK-31122-7 | 4X | Blue |



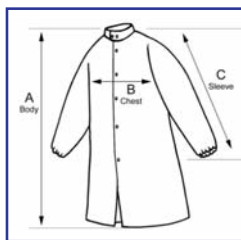
Breathable

Critical Cover® GenPro® Frocks

Basic Protection for Non-Hazardous Environments

Features & Benefits: Designed for non-hazardous, general purpose environments, the GenPro frock is ideal for your personnel as well as for visitors to your facility. Our GenPro frock is the perfect solution for protecting your clothes while offering comfort and breathability. Our GenPro frock is an extra long design to provide additional coverage. The no-pocket design helps you control contaminants from entering or leaving sensitive areas.

Construction Details: Our GenPro frocks feature serged seams, elastic wrists, snap mandarin collar, a five-snap closure with a raglan sleeve design for additional comfort. No pockets.

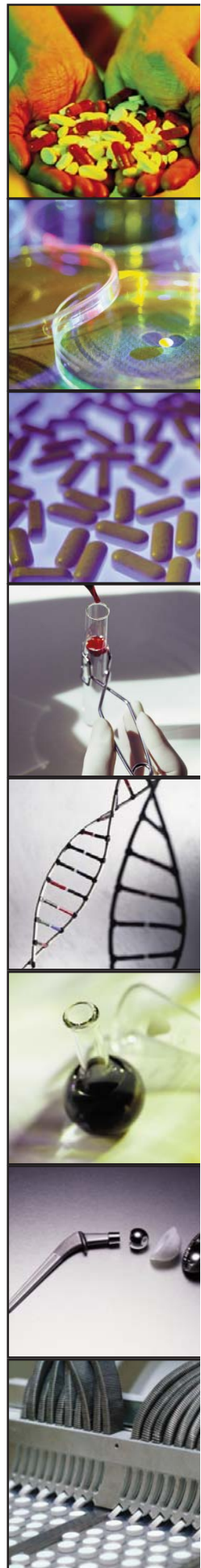


Raglan sleeve, elastic wrist,
snap collar, snap close,
serged seams, white
30/case

| Part No. | Size |
|------------|------|
| FK-12122-1 | S |
| FK-12122-2 | M |
| FK-12122-3 | L |
| FK-12122-4 | XL |
| FK-12122-5 | 2X |
| FK-12122-6 | 3X |



Full Coverage



Critical Cover® Lab Coats

Premium Construction Options

Material Options

- Microbreathe™ Material
- ComforTech® Material
- AlphaGuard® Material
- GenPro® Material

Seam Options

- Serged

Wrist Options

- Elastic
- Knit

Pocket Options

- 3 Pockets
- No Pockets

Snap Closure

Tapered Collar

*Not all lab coats are available with all options.

Critical Cover® Microbreathe™ Lab Coats

Cool, Clean, Comfortable and Protective

Features & Benefits: Soft, durable Microbreathe material acts as an impervious barrier to particles, biologicals, and fluids. The ultra clean material has a filtration efficiency of 99.9% to prevent contamination on the wearer from passing through to your product or environment. A breathable and efficient material, Microbreathe lab coats are comfortable to wear and will provide you with the physical properties required to effectively manage your Controlled Environment.

Strong, yet soft to the touch, Microbreathe lab coats provide both protection and comfort. The tapered collar is stylish and comfortable and the five-snap closure is designed to provide full coverage without gaps. The length is appropriately adjusted to size, which provides additional coverage and protection for the wearer. Our Microbreathe lab coats are treated with an anti-stat application for those environments where electro-static dissipative (ESD) protection is required.

Construction Details: Our Microbreathe lab coats feature serged seams, a five-snap closure, elastic wrists, tapered collar, and three pockets.

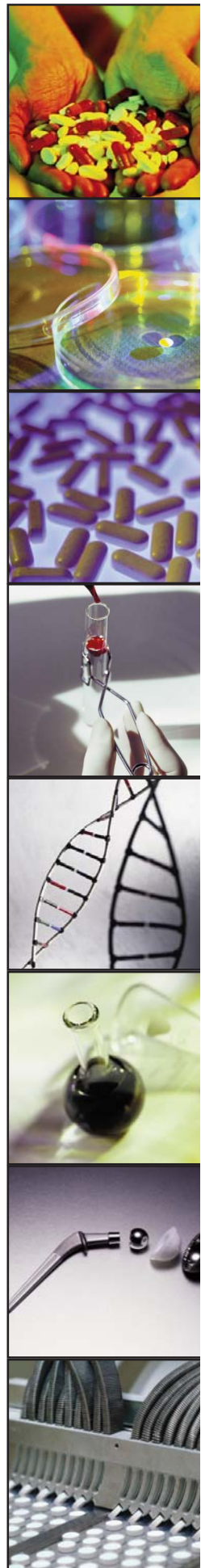


Tapered collar, elastic wrist,
3 pockets, snap close,
serged seams, white
25/case

| Part No. | Size |
|------------|------|
| LC-52621-1 | S |
| LC-52621-2 | M |
| LC-52621-3 | L |
| LC-52621-4 | XL |
| LC-52621-5 | 2X |
| LC-52621-6 | 3X |
| LC-52621-9 | 4X |



99.9% Filtration Efficiency



Critical Cover® ComforTech® Lab Coats

Keep Wearers Cool, Comfortable and Protected

Features & Benefits: The strong, lightweight and breathable ComforTech material gives your personnel excellent protection from fluids, light chemical splash, particles and biologicals without compromising their comfort. The unique fabric exhibits a low particle count and a high filtration efficiency of 99.9%. For cool, comfortable, all-day wear, this material readily dissipates heat while effectively meeting all your Controlled Environment needs.

The length is appropriately adjusted to size, which provides additional coverage for the wearer. Our ComforTech lab coats are treated with an anti-stat application for those environments where electro-static dissipative (ESD) protection is required.

Construction Details: Our ComforTech lab coats feature serged seams, a five-snap closure, elastic wrists, tapered collar, and three pockets.



| Part No. | Size |
|------------|------|
| LC-J2621-1 | S |
| LC-J2621-2 | M |
| LC-J2621-3 | L |
| LC-J2621-4 | XL |
| LC-J2621-5 | 2X |
| LC-J2621-6 | 3X |
| LC-J2621-9 | 4X |

Tapered collar, elastic wrist,
3 pockets, snap close,
serged seams, white
25/case



Fluid Impervious

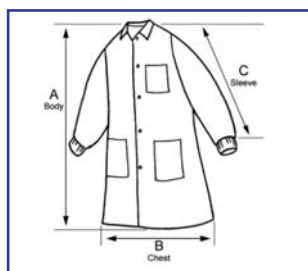
Critical Cover® AlphaGuard® Lab Coats

High Performance, Extra Comfort

Features & Benefits: Our AlphaGuard material is soft, breathable, and fluid repellent. Additionally, our AlphaGuard lab coats are clean, durable and provide an 84% filtration efficiency rating in an effort to provide your teams with a comfortable and performing garment while meeting your Critical Environment protocols. Superior vapor transmission performance wicks perspiration through the fabric to keep workers cool and comfortable.

The tapered collar is stylish and comfortable and the five-snap closure is designed to provide full coverage without gaps. The length is appropriately adjusted to size, which provides additional coverage and protection for the wearer. Our AlphaGuard lab coats are treated with an anti-stat application for those environments where electro-static dissipative (ESD) protection is required. Our AlphaGuard lab coats are available in both blue and white.

Construction Details: Our AlphaGuard lab coats are available in two styles: knit wrist or elastic wrist and both feature serged seams, five-snap closure, tapered collar, and three pockets.



Tapered collar, knit wrist,
3 pockets, snap close,
serged seams
30/case

| Part No. | Size | Color |
|------------|------|-------|
| LC-32632-1 | S | White |
| LC-32632-2 | M | White |
| LC-32632-3 | L | White |
| LC-32632-4 | XL | White |
| LC-32632-5 | 2X | White |
| LC-32632-6 | 3X | White |
| LC-32632-9 | 4X | White |

| | | |
|------------|----|------|
| LC-31632-1 | S | Blue |
| LC-31632-2 | M | Blue |
| LC-31632-3 | L | Blue |
| LC-31632-4 | XL | Blue |
| LC-31632-5 | 2X | Blue |
| LC-31632-6 | 3X | Blue |
| LC-31632-9 | 4X | Blue |

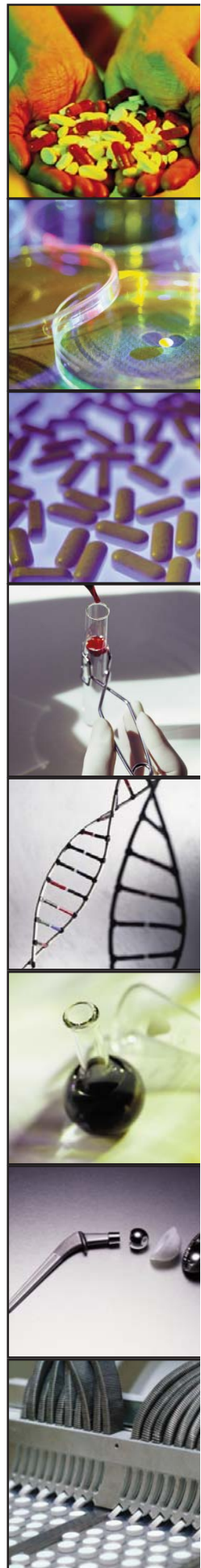


Tapered collar, elastic wrist,
3 pockets, snap close,
serged seams
30/case

| Part No. | Size | Color |
|------------|------|-------|
| LC-32622-1 | S | White |
| LC-32622-2 | M | White |
| LC-32622-3 | L | White |
| LC-32622-4 | XL | White |
| LC-32622-5 | 2X | White |
| LC-32622-6 | 3X | White |
| LC-32622-9 | 4X | White |



Fluid Repellent

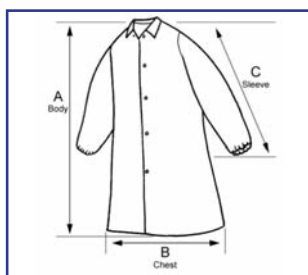


Critical Cover® GenPro® Lab Coats

Basic Protection for Non-Hazardous Environments

Features & Benefits: Designed for non-hazardous, general purpose environments, our GenPro lab coats are ideal for your personnel as well as for visitors to your facility. The GenPro lab coat is the perfect solution for protecting your clothes while offering comfort and breathability. Our no-pocket design helps you control contaminants from entering or leaving sensitive areas.

Construction Details: Our GenPro lab coats are available in two styles: elastic wrist with no pockets and knit wrist with three pockets and both feature serged seams, tapered collar and a five-snap closure.



Tapered collar, elastic wrist,
no pockets, snap close,
serged seams, white
25/case

Part No.

LC-12421-1
LC-12421-2
LC-12421-3
LC-12421-4
LC-12421-5
LC-12421-6
LC-12421-9

Size

S
M
L
XL
2X
3X
4X



Tapered collar, knit wrist,
3 pockets, snap close,
serged seams, white
30/case

Part No.

LC-12632-1
LC-12632-2
LC-12632-3
LC-12632-4
LC-12632-5
LC-12632-6

Size

S
M
L
XL
2X
3X



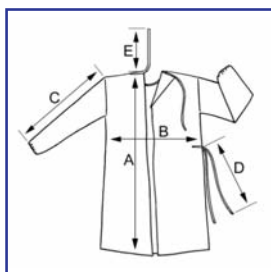
Excellent Breathability

Critical Cover® BarrierTech® Gowns

A Durable and Fluid Impervious Solution

Features & Benefits: Our BarrierTech material provides protection for the wearer from particles, fluids and light chemical splash. Our BarrierTech gowns offer a durable and fluid impervious solution for both your lab and/or production areas. BarrierTech also has a low particle count for use in Controlled Environments. Banded ties are attached to the neck and waist for easy and secure closure.

Construction Details: Serged seams and elastic wrists and available in two colors, blue and white.

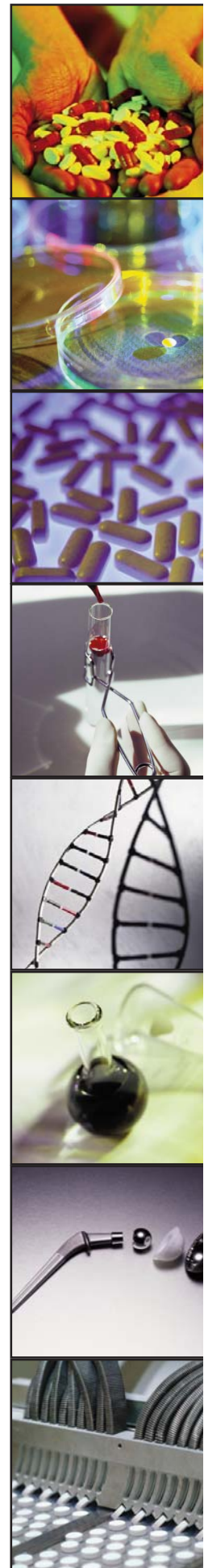


Full coverage, elastic wrist,
banded ties at neck & waist,
serged seams
50/case

| Part No. | Size | Color |
|------------|-------|-------|
| GN-21524-3 | Univ. | Blue |
| GN-22524-2 | M | White |
| GN-22524-3 | Univ. | White |
| GN-22524-4 | XL | White |



Protection from Fluids

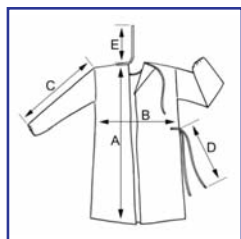


Critical Cover® GenPro® Gowns

Basic Protection for Non-Hazardous Environments

Features & Benefits: GenPro gowns keep your clothes clean and remain comfortable all day long. With exceptional breathability and moderate barrier protection, the gowns perform well in dry, non-hazardous environments. The strong, lightweight GenPro fabric provides a limited barrier to particulates and contamination. Banded ties are attached to the waist and neck for easy closure.

Construction Details: Serged seams and elastic wrists.



Part No.
GN-13124-3
GN-13124-4

Size
Univ.
XL

Full coverage, elastic wrist,
banded ties at neck & waist,
serged seams, yellow
50/case



Comfortable

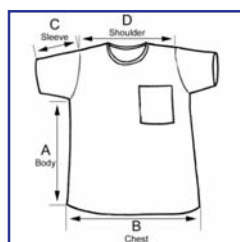
Critical Cover® AlphaGuard® Scrub Shirts & Pants

Perfect Balance of Comfort and Protection

Features & Benefits: Our AlphaGuard material is extremely soft and comfortable to wear. Our scrubs provide a discreet barrier for your employees and are highly breathable to keep one cool and dry. AlphaGuard is fluid repellent and delivers high filtration efficiency while maintaining a low particle count. AlphaGuard is also static dissipative and perfect for applications that require an electro-static dissipative (ESD) material.

Our scrub shirts are available in short and long sleeve styles with a round banded neck and one pocket. The long sleeve version is designed with elastic wrists. Our scrub pants include a spandex waist, a rear pocket and are reinforced along the inner thigh area.

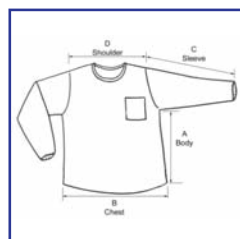
Construction Details: Safety stitched seams for added strength and durability.



Round neck, banded collar,
safety stitched seams, blue
30/case

Short Sleeve Part No.

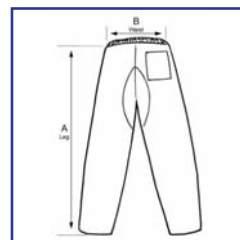
| | Size |
|------------|------|
| WS-23921-1 | S |
| WS-23921-2 | M |
| WS-23921-3 | L |
| WS-23921-4 | XL |
| WS-23921-5 | 2X |
| WS-23921-6 | 3X |
| WS-23921-7 | 4X |



Round neck, banded collar,
elastic wrist,
safety stitched seams, blue
30/case

Long Sleeve Part No.

| | Size |
|------------|------|
| WS-23221-1 | S |
| WS-23221-2 | M |
| WS-23221-3 | L |
| WS-23221-4 | XL |
| WS-23221-5 | 2X |
| WS-23221-6 | 3X |
| WS-23221-7 | 4X |



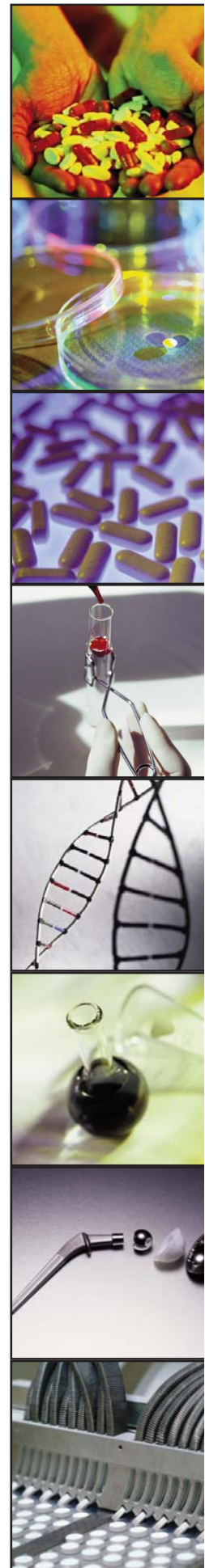
Spandex waist, 1 pocket,
reinforced inner thigh area,
safety stitched seams, blue
30/case

Pants

| Part No. | Size |
|------------|------|
| WP-23322-1 | S |
| WP-23322-2 | M |
| WP-23322-3 | L |
| WP-23322-4 | XL |
| WP-23322-5 | 2X |
| WP-23322-6 | 3X |
| WP-23322-7 | 4X |



Extra Comfort



Sleeves

Critical Cover® ChemTech® Sleeves

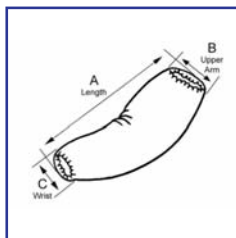
Safety Barrier from the Inside Out

Features & Benefits: Our ChemTech line of apparel offers excellent chemical barrier properties in addition to liquid and particle holdout performance. This material is designed with a safety barrier on the inside for an added measure of protection. Our ChemTech sleeves are strong and durable with sonic welded seams for additional protection.

Construction Details: Tapered design with sonic welded seams

| Part No. | Size |
|------------|-------|
| MS-01KT4-8 | Univ. |
| MS-01KT4-4 | XL |

Tunneled elastic at both ends,
sonic welded seams, yellow
100/case



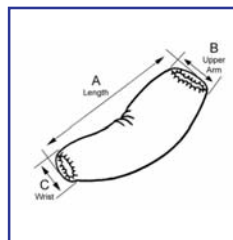
Chemical Barrier

Critical Cover® ComforTech® Sleeves

Excellent Protection Where It's Needed Most

Features & Benefits: To maximize barrier protection, our ComforTech sleeves are designed with sonic welded seams for added durability and protection. This ensures the seam effectively matches the barrier properties of the material while increasing particle holdout and providing protection against light chemical splash. Our ComforTech material exhibits a low particle count so that you can meet the requirements of your Controlled Environment protocols.

Construction Details: Tapered design with sonic welded seams and elastic at both ends.



| Part No. | Size |
|------------|-------|
| MS-01J06-8 | Univ. |
| MS-01J06-4 | XL |

Tapered sleeve,
elastic both ends,
sonic welded seams, white
300/case

Fluid and Particulate Barrier

Critical Cover® GenPro® Sleeves

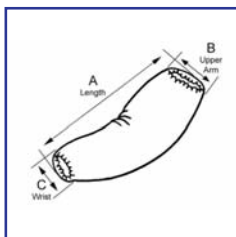
Economical Choice

Features & Benefits: Strong, lightweight, and breathable, our GenPro fabric is designed for use in non-hazardous environments. The GenPro sleeve will act as a limited barrier to contaminants and particulates. The tapered design has elastic at both ends for a snug and comfortable fit.

Construction Details: Tapered design with serged seams and elastic at both ends.

| Part No. | Size |
|------------|-------|
| MS-01135-8 | Univ. |

Tapered sleeve,
elastic both ends,
serged seams, white
200/case



Latex-Free

Hoods

Critical Cover® ComforTech® Hoods

Protection to Put You Ahead of the Game

Features & Benefits: Coverage above the neck is critical as this area has the potential to produce significant amounts of particle contamination in your Controlled Environment. Our low particle count ComforTech disposable hood protects the wearer from light chemical splash and non-hazardous biologicals while keeping them cool and comfortable. The exceptional 99.9% filtration efficiency effectively contains all of the contamination that can be produced from this part of the body. ComforTech material dissipates heat build-up quickly and has inherent tear strength properties that make for a cool and durable product.

Our open-face ComforTech hood provides complete coverage without obstructing your vision or range of motion. The face opening has bound seams for comfort and the ties enable a snug, comfortable fit. Material is exceptionally clean and static-dissipative.

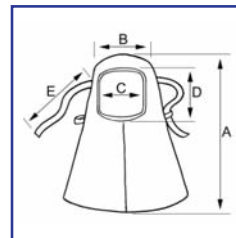
Construction Details: Open face, attached crown, ties, bound seams.



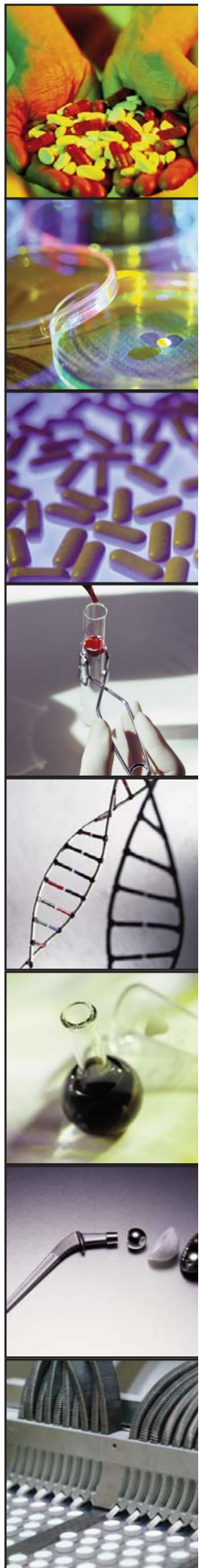
Unobstructed Vision

Part No.
SD-J1533-B

Size
Univ.



Open face, attached crown,
ties, bound seams, white
125/case

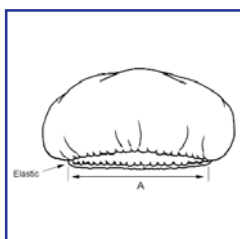


Bouffants and Beard Covers

Critical Cover® GenPro® Bouffants

Basic Protection for Non-Hazardous Environments

Features & Benefits: Our GenPro bouffants provide the appropriate level of protection required to contain particles resulting from the head area. Our strong, lightweight fabric also gives users modest protection in dry, non-hazardous environments. Our bouffants have a non-binding, latex-free elastic opening for a perfect and secure fit.



Part No.

BO-13821-B

BO-13824-B

BO-13826-B

Size

21"

24"

26"

Lightweight material,
latex-free, white
10 bags of 100 each
1,000/case



Economical

Critical Cover® GenPro® Beard Covers

Basic Protection for Non-Hazardous Environments

Features & Benefits: Our breathable GenPro beard covers are ideal for use in dry, non-hazardous environments. The strong, lightweight, GenPro fabric delivers protection and all-day comfort. Our beard covers contain a non-binding, latex free elastic opening for a perfect and secure fit.

Construction Details: Latex-free elastic headband.



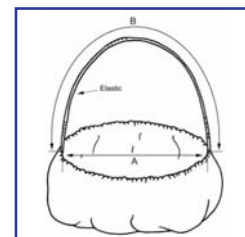
General Use

Part No.

MS-14138-8

Size

Univ.



Lightweight material,
latex-free headband, white
10 bags of 100 each
1,000/case

Critical Cover® Shoe and Boot Covers

Superior Protection without Sacrificing Comfort

Shoe Covers

Material Options

- BarrierTech® Material
- AquaTrak® Material
- SureGrip™ Material
- GenPro® Material
- CPE Material
- NaviTrak® Material



Seam Options

- Serged Seams
- Sonic Welded Seams
- Heat-sealed Seams

Sole Options

- UltraGrip™ Anti-Skid Sole
- MaxGrip® Anti-Skid Sole
- Seamless Sole, Butterfly Style
- Serged Seam Sole

Conductive Option

- SureGrip™ Conductive Shoe Covers

Boot Covers

Material Options

- Microbreathe™ Material
- AquaTrak® Material
- GenPro® Material



Secure Options

- Elastic Top with Ankle Ties
- Elastic Top and Ankle
- Elastic All Around

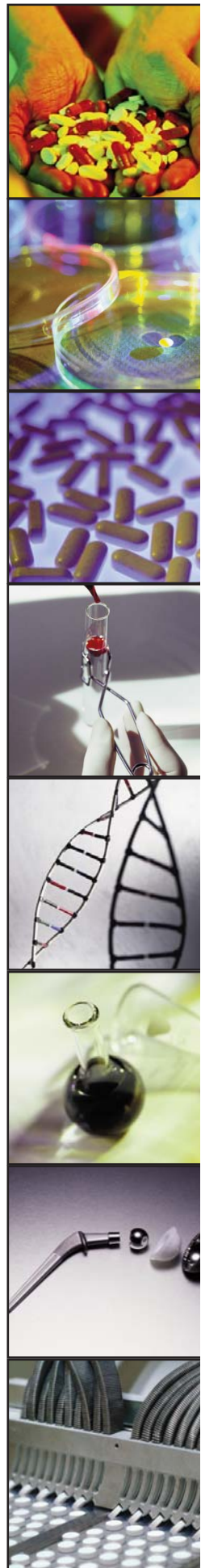
Seam Options

- Serged Seams
- Sonic Welded Seams

Sole Options

- UltraGrip™ Anti-Skid Sole
- Seamless Sole, Butterfly Style
- Serged Seam Sole

*Not all options are available with all shoe and boot covers.

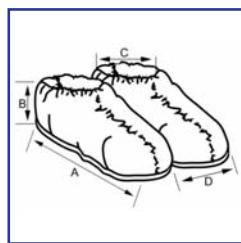


Critical Cover® UltraGrip™ Shoe Covers

The Ultimate in Slip and Fall Protection

Features & Benefits: Our high performance, anti-skid UltraGrip sole offers the ultimate in slip and fall protection on wet and dry floors. Our proprietary sole material is also extremely clean, durable and strong enough to withstand even the most abrasive floor surfaces. The upper material used with our UltraGrip soles is made of BarrierTech® and provides particle holdout and protection from fluids and light chemical splash. Our UltraGrip shoe cover design provides full coverage up through the ankle area. The UltraGrip shoe covers are available in two colors, (white and blue) to support specific departments and four sizes, (M, L, Univ., XL) to ensure a proper fit. Ultra Grip is suitable for use in a Controlled Environment.

Construction Details: High performance anti-skid sole with serged seams.



| Part No. | Size | Shoe Color | Thread Color |
|-------------|-------|------------|--------------|
| SH-E1315-BH | M | White | Yellow |
| SH-E1316-BH | L | White | Orange |
| SH-E1312-BH | Univ. | White | White |
| SH-E1313-BH | XL | White | Black |
| SH-M1315-BH | M | Blue | Yellow |
| SH-M1316-BH | L | Blue | Orange |
| SH-M1312-BH | Univ. | Blue | White |
| SH-M1313-BH | XL | Blue | Black |

Anti-skid sole, thread colors for convenient size identification, serged seams
100 pair/case



Lightweight

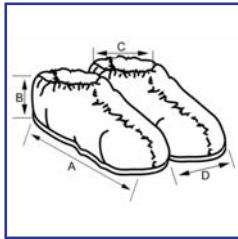


Critical Cover® MaxGrip® Shoe Covers

Maximum Grip Protection

Features & Benefits: Our MaxGrip shoe covers are ideal for those areas where slip & fall protection is needed in damp to dry areas. The anti-skid properties of the MaxGrip sole have outstanding performance on a variety of surfaces and in a number of applications. The upper material used with our MaxGrip sole is made of BarrierTech® and provides particle holdout and protection from fluids and light chemical splash. Available in Cleanroom white and five sizes (S, M, L, Univ., XL) to ensure a proper fit. MaxGrip is suitable for use in a Controlled Environment.

Construction Details: MaxGrip skid resistant sole with serged seams.

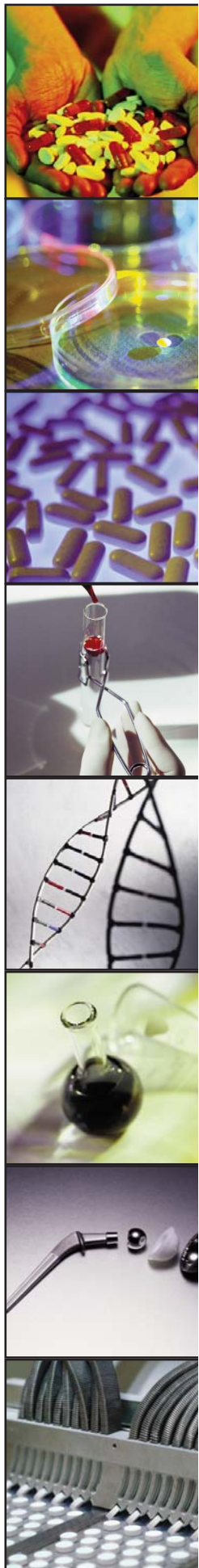


| Part No. | Size | Shoe Color | Thread Color |
|-------------|-------|------------|--------------|
| SH-E1W11-BH | S | White | Green |
| SH-E1W15-BH | M | White | Yellow |
| SH-E1W16-BH | L | White | Orange |
| SH-E1W12-BH | Univ. | White | White |
| SH-E1W13-BH | XL | White | Black |

Anti-skid sole, thread colors for convenient size identification, serged seams
100 pair/case



Anti-skid Sole



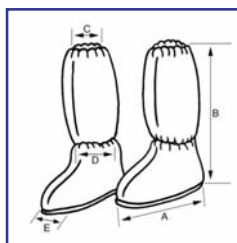
Critical Cover® UltraGrip™ Boot Covers

Ultimate Protection Top to Bottom

Features & Benefits: Acquire the premium in slip and fall protection on wet and dry floors with the UltraGrip soled high-top boot cover. Our sole material is also clean, durable and strong enough to stand up to even the most abrasive floor surfaces. We utilize our proprietary Microbreathe™ material for the upper portion of the boot cover. Microbreathe is a soft, strong, and flexible material with a high vapor transmission rate for all day comfort. It also provides excellent barrier protection and particle holdout and is the preferred choice for Controlled Environments. An effective product on many fronts, our UltraGrip boot covers are also static dissipative for those applications where electro-static dissipative (ESD) protection is required.

Our high top boot covers fit over the calf with a latex-free elastic top to provide a comfortable fit and to prevent the boot cover from sliding down. Our UltraGrip boot covers are available with an elastic ankle or ankle ties.

Construction Details: High performance anti-skid sole with serged seams and different thread coloring for convenient size identification.



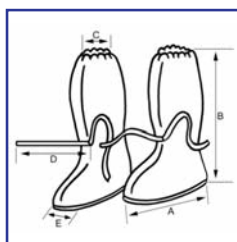
Elastic Ankle

| Part No. | Size | Boot Color | Thread Color |
|------------|-------|------------|--------------|
| BT-A1815-B | M | White | Yellow |
| BT-A1812-B | Univ. | White | White |
| BT-A1813-B | XL | White | Black |

Elastic top and ankle, anti-skid sole, serged seams
100 pair/case



Durable



Ankle Ties

| Part No. | Size | Boot Color | Thread Color |
|------------|-------|------------|--------------|
| BT-A1315-B | M | White | Yellow |
| BT-A1312-B | Univ. | White | White |
| BT-A1313-B | XL | White | Black |

Elastic top with ankle ties, anti-skid sole, serged seams
100 pair/case



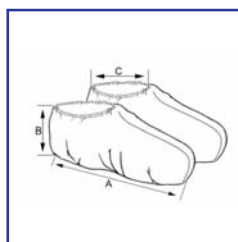
Durable

Critical Cover® AquaTrak® Shoe Covers

Outstanding Performance in Wet Environments

Features & Benefits: Our proprietary AquaTrak material provides superior slip and fall protection in both wet and dry conditions. This advanced material was specifically developed to outperform the market in wet conditions. AquaTrak is a fluid impervious material and performs well even in low-level standing water. With two different designs available, seamless sole with a serged seam upper or with complete heat-sealed seams for added protection, AquaTrak is the preferred choice for many applications.

Construction Details: Available in two styles: seamless sole with serged seams or heat-sealed seams and multiple colors for easy department designation.



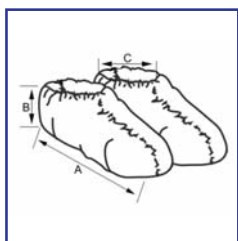
Heat-sealed Shoe Covers

| Part No. | Size | Shoe Color |
|-----------|-------|------------|
| AT11111-B | Univ. | Blue |
| AT11112-B | XL | Blue |
| AT21111-B | Univ. | White |
| AT21112-B | XL | White |
| AT31111-B | Univ. | Black |
| AT31112-B | XL | Black |

Fluid impervious,
75 pair/case



Fluid Impervious



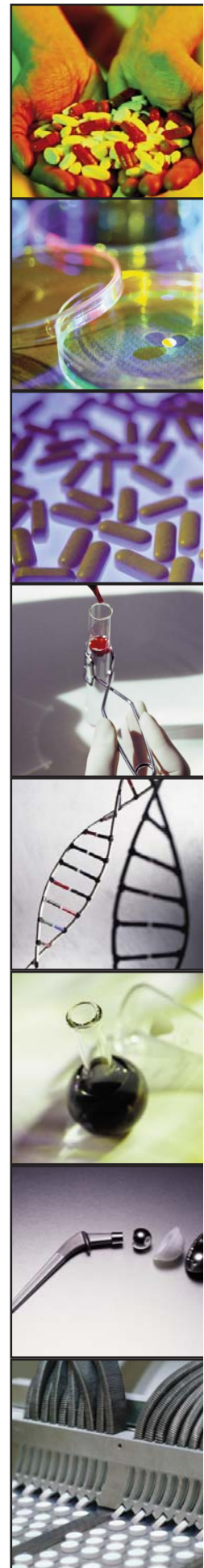
Seamless Sole, Serged Seams Shoe Covers

| Part No. | Size | Shoe Color | Thread Color |
|------------|-------|------------|--------------|
| SH-T1182-B | Univ. | White | White |
| SH-T1183-B | XL | White | Black |
| SH-T1184-B | 2X | White | Blue |
| SH-91182-B | Univ. | Blue | White |
| SH-91183-B | XL | Blue | Black |
| SH-91184-B | 2X | Blue | Blue |

Fluid impervious, butterfly style
75 pair/case



Fluid Impervious

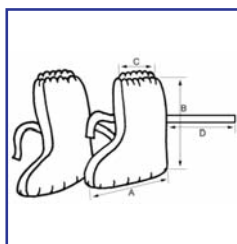


Critical Cover® AquaTrak® Boot Covers

Superior Traction in Wet and Dry Conditions

Features and Benefits: Our ankle high AquaTrak boot covers provide superior anti-skid properties in wet and dry conditions. A seamless sole design with sonic welded seams makes our ankle high boot covers impervious to liquids and provides appropriate particle holdout. The serged seam version provides for an excellent fit with similar anti-skid properties of its counterpart. AquaTrak material exhibits a low particle counts and offers superior protection against particles, biologicals, fluids and light chemical splash.

Construction Details: Available in two styles: seamless sole sonic welded seams or serged seams and three colors for easy department designation.



Sonic Welded, Ankle High Boot Covers

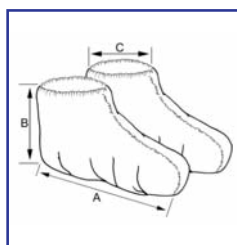
| Part No. | Size | Boot Color | Thread Color |
|------------|-------|------------|--------------|
| BT-91412-B | Univ. | Blue | White |
| BT-91413-B | XL | Blue | Black |

Fluid impervious, elastic top,
ankle ties, seamless sole
100 pair/case



BT-91412-B

Fluid Impervious



Serged Seams, Ankle High Boot Covers

| Part No. | Size | Boot Color | Thread Color |
|------------|-------|------------|--------------|
| BT-T1X12-B | Univ. | White | White |
| BT-91X13-B | XL | Blue | Black |
| BT-C1X14-B | 2X | Black | Blue |

Fluid impervious, elastic all around
100 pair/case



BT-91X12-B

Fluid Impervious

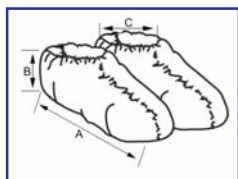
Critical Cover® SureGrip™ Shoe Covers

Multiple Styles & Packaging Options for Maximum Versatility

Features and Benefits: Proven in the marketplace, our SureGrip shoe covers have established themselves as the shoe cover of choice for a wide range of floor surfaces and in many different applications. Combining durability and cleanliness with outstanding anti-skid properties, SureGrip provides you with a blend of unmatched performance and overall value.

Multiple style and packaging options add to the versatility of SureGrip: serged seams for added strength, traction and a snug fit for safety; unique conductive shoe cover for those environments where electro-static dissipation (ESD) protection is required. Our Gaylord packaging option (30 individual bags of 300 each per master carton) reduces waste, labor, and purchase orders while increasing your shelf-space and providing a reusable, pallet sized container for your recyclables or other materials.

Construction Details: Available in four styles: serged seam, butterfly style, heat-sealed and conductive to meet any/all market applications. (See page 34 for additional styles).



Serged Seams Shoe Covers

| Part No. | Size | Shoe Color | Thread Color |
|------------|-------|------------|--------------|
| SH-X1222-B | Univ. | Blue | White |
| SH-X1223-B | XL | Blue | Black |
| SH-X1224-B | 2X | Blue | Blue |

150 pair/case

Gaylord Packaging

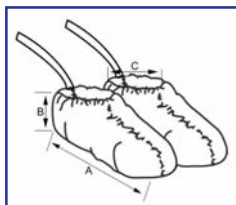
| Part No. | Size | Shoe Color | Thread Color |
|------------|-------|------------|--------------|
| SH-X1272-B | Univ. | Blue | White |
| SH-X1273-B | XL | Blue | Black |
| SH-X1274-B | 2X | Blue | Blue |

4,500 pair/case

Non-skid, thread colors for size identification



Positive Traction



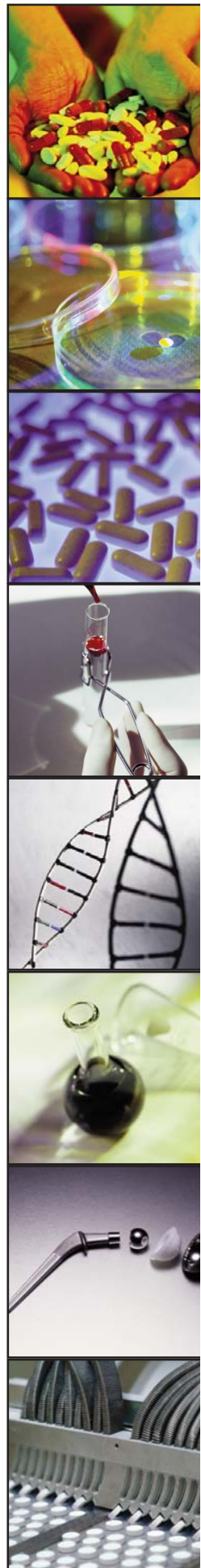
Conductive, Serged Seams Shoe Covers

| Part No. | Size | Shoe Color | Thread Color |
|------------|-------|------------|--------------|
| SH-12522-B | Univ. | Blue | White |
| SH-12523-B | XL | Blue | Black |

Conductive for ESD concerns, anti-skid
150 pair/case



Positive Traction



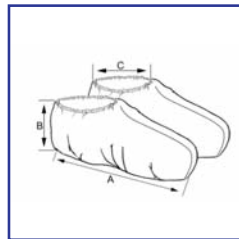
Critical Cover® SureGrip® Shoe Covers

Multiple Style Options for Maximum Versatility

Features & Benefits: Proven in the marketplace, our SureGrip shoe covers have established themselves as the shoe cover of choice for a wide range of floor surfaces and in many different applications. Combining durability and cleanliness with outstanding anti-skid properties, SureGrip provides you with a blend of unmatched performance and overall value.

Multiple styles add to the versatility of SureGrip: heat-sealed seam version for absolute particulate and biological containment; butterfly style with serged seams for a comfortable fit.

Construction Details: Available in four styles: serged seam, butterfly style, heat-sealed and conductive to meet any/all market applications. (See page 33 for additional styles).



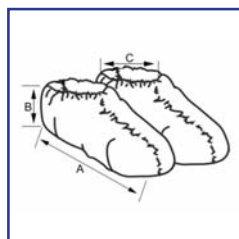
Heat-sealed Shoe Covers

| Part No. | Size | Shoe Color |
|-----------|------|------------|
| AT71122-B | XL | Blue |
| AT81122-B | XL | Dk.Blue |

Heat-sealed seams
150 pair/case



Positive Traction



**Butterfly Style,
Serged Seams Shoe Covers**

| Part No. | Size | Shoe Color | Thread Color |
|------------|-------|------------|--------------|
| SH-01132-B | Univ. | Lt. Blue | White |
| SH-01133-B | XL | Lt. Blue | Black |
| SH-01134-B | 2X | Lt. Blue | Blue |

Butterfly style, seamless sole,
serged seams
200 pair/case



Positive Traction

Critical Cover® GenPro® Shoe & Boot Covers

General Purpose, Value Shoe & Boot Covers

Features & Benefits: Our GenPro shoe and boot covers are lightweight and of value for use in general purpose environments or for visitors to your facility. The non-conductive shoe covers and high top boot covers provide a moderate barrier to fluids, particulates and contamination.

This category of shoe/boot cover is for use in non-hazardous environments only.

Construction Details: GenPro shoe covers are available in anti-skid or plain style. The boot covers are available in plain style.

Anti-skid Serged Seams Shoe Covers*



| Part No. | Size | Shoe Color | Thread Color |
|------------|-------|------------|--------------|
| SH-71222-B | Univ. | Blue | White |
| SH-71223-B | XL | Blue | Black |

Anti-skid adhesive on sole,
serged seams
150 pair/case



* These shoe covers contain natural latex rubber.

Limited Use

Serged Seams Shoe Covers



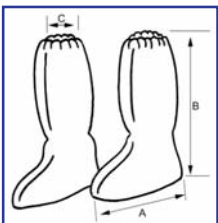
| Part No. | Size | Shoe Color | Thread Color |
|------------|-------|------------|--------------|
| SH-61222-B | Univ. | Blue | White |
| SH-61223-B | XL | Blue | Black |

Serged seams
150 pair/case



Limited Use

Serged Seams Boot Covers

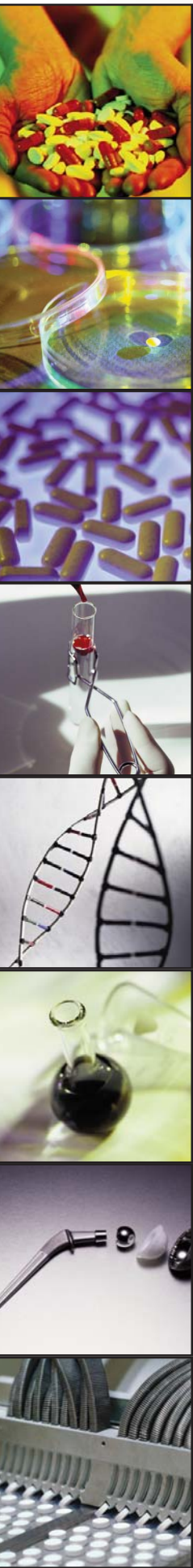


| Part No. | Size | Shoe Color | Thread Color |
|------------|-------|------------|--------------|
| BT-B1L16-B | L | White | Orange |
| BT-B1L12-B | Univ. | White | White |
| BT-B1L13-B | XL | White | Black |

Serged seams
100 pair/case



Limited Use



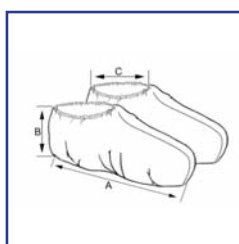
Economy Shoe Covers

Critical Cover® CPE Shoe Covers

Heat-sealed, Seamless Construction

Features & Benefits: Our CPE film shoe covers are ideal for many applications where value and transition are required. Whether your new Controlled Environment is under construction or you need to temporarily utilize a shoe cover in the donning process or for movement within your facility, our CPE is the product of choice.

Construction Details: Available in blue or white, CPE is an all film, fluid resistant product. Bulk packed 1000 per case.



| Part No. | Size | Shoe Color |
|------------|------|------------|
| SH-J1253-B | XL | White |
| SH-R1253-B | XL | Blue |

All film, fluid resistant, seamless sole, heat-sealed seams
500 pair/case



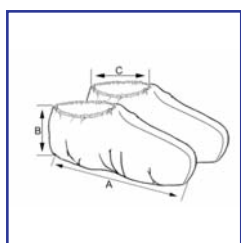
Lightweight

Critical Cover® NaviTrak® Shoe Covers

Ideal Short Wear Performance

Features & Benefits: Heat-sealed and fluid impervious, our all-film NaviTrak shoe covers are designed for limited use on non-aggressive floor surfaces. They combine anti-skid characteristics with a very low particulate count.

Construction Details: All film, fluid resistant, heat-sealed seams.



| Part No. | Size | Shoe Color |
|-----------------|-------|------------|
| NaviTrak | | |
| CR11121-B | Univ. | Blue |
| CR11122-B | XL | Blue |

| | | |
|--------------------|-------|-------|
| NaviTrak II | | |
| CR21121-B | Univ. | White |
| CR21122-B | XL | White |

All film, impervious, heat-sealed seams
150 pair/case



Heat-sealed

Critical Cover® Garment Packaging

Layered Packaging Design to Prevent Contamination from Entering Your Controlled Environment.

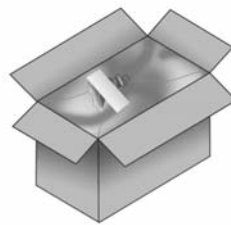
- Packaged in a primary vacuum heat-sealed bag, carton liner and outer corrugated carton to prevent cross contamination and contamination migration from one environment to another
- All garments are precision folded and stacked within the primary bag to permit efficient storage with or without bins
- Primary bag(s) placed in clear carton liner that is knotted and taped closed
- All open seams on shipping containers are tape-sealed for additional protection from possible contamination
- Four-sided carton labeling allows easy product identification and inventory management



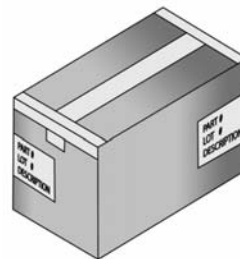
Primary Bag,
heat-sealed



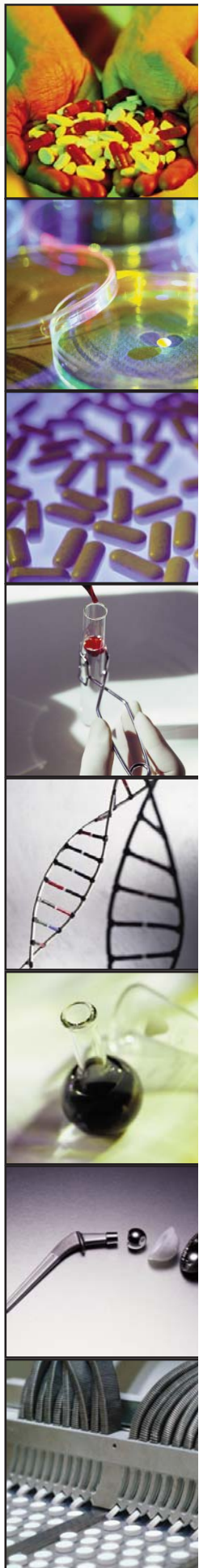
Carton Liner



Open carton with
taped down liner



Sealed carton with
two corner labels



Critical Cover® Facemasks and Face Shields

Alpha Pro Tech designs and manufactures a wide range of protective Facemasks and Face Shields for the Laboratory, Cleanroom and light Industrial markets. With a variety of protective products and configurations, we have just the right one for your specific environment and/or application.

Many of our Facemasks incorporate Alpha Pro Tech's patented and integrated Magic Arch® and PFL® (Positive Facial Lock®) feature that enhance user comfort and product performance.



PFL® Mask



N-95 Particulate Respirator



ShieldMate®

Facemasks

Critical Cover® PFL® Facemasks

Breathe Easier and Safer

Features & Benefits: The innovative and patented Positive Facial Lock® (PFL®) feature utilizes our exclusive Twist-Seal® technology that allows the user to create a custom fit each and every time. This unique feature significantly reduces the possibility of the user inhaling airborne contaminants and creates a positive seal to a variety of facial sizes and features. Additionally, the integrated Magic Arch® prevents the mask from coming in contact with the user's nose and mouth thereby making it easier to breathe while enhancing filtration efficiency. The hypoallergenic materials used in the PFL masks create a durable exterior and a soft, comfortable interior.



Positive Facial Lock Masks with Magic Arch Supports

PFL® Headband Masks

608 Blue
608 BS Blue Stripe
608 PD Purple Designer
300/case (6 boxes of 50)
9608 White
Cleanroom Packaging
300/case (6 bags of 50)

PFL® Ear Loop Masks

615 Blue
615 BS Blue Stripe
615 PD Purple Designer
615 PK Pink Stripe
300/case (6 boxes of 50)



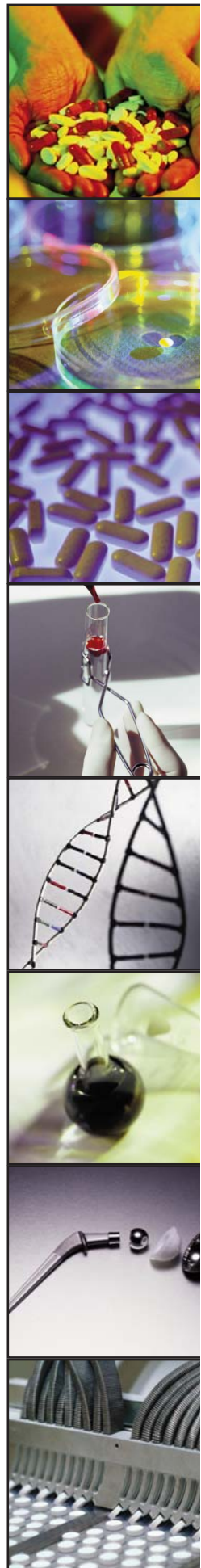
Positive Facial Lock Masks - No Magic Arch

PFL® Headband Masks

108 Blue
300/case (6 boxes of 50)
9908 Blue
Cleanroom Packaging
300/case (6 bags of 50)

PFL® Ear Loop Masks

115 Blue
300/case (6 boxes of 50)



Facemasks

Critical Cover® PFL® Laser Facemask

PFL® Technology and Laser Plume Protection

Features & Benefits: The PFL® Laser mask effectively filters plumes during laser surgery. The mask utilizes Positive Facial Lock® technology with an integrated Twist-Seal® chin piece in the facemask to give everyone in the operating room a custom fit each time. The PFL® design helps eliminate the potential of inhaling airborne contaminants while maintaining a comfortable seal to the user's face. The patented and integrated Magic Arch® technology prevents the mask from coming in contact with the user's nose and mouth thereby making it easier to breathe while enhancing filtration efficiency. These durable masks are made of hypoallergenic materials and have a smooth, soft interior for ultimate comfort.



Laser Plume Protection

PFL® Laser Headband Mask

638 Grey Stripe
210/case (6 boxes of 35)

PFL® N-95 Particulate Respirator

NIOSH Approved Respirator

Features & Benefits: The Positive Facial Lock® (PFL®) N-95 Particulate Respirator meets the World Health Organization (WHO) and the Centers for Disease Control (CDC) recommended protection levels (where applicable) for many airborne contaminants. NIOSH Certified, our N-95 delivers the appropriate amount of filtration efficiency and when combined with a trio of patented and unique design features, also delivers the user a comfortable, custom fitting facemask. The integrated Magic Arch® technology creates a breathing chamber within the facemask by holding it away from the user's nose and mouth. Our PFL technology, incorporating an integrated Twist Seal® chin piece, helps the wearer create a perfect fit every time.

N-95 Particulate Respirator

695 Teal Stripe
210/case (6 boxes of 35)



Protection Plus

Facemasks

Critical Cover® CoolOne™ Facemasks

Cool Design, Very Cool Comfort

Features & Benefits: Thanks to the patented Magic Arch® support, CoolOne facemasks give users cooler, more comfortable performance than other designs currently on the market. The integrated Magic Arch® support strip holds the mask away from the nose and mouth to create a larger breathing chamber to enhance user comfort. Choose from tie strings, ear loops or ear loops with an anti-fog application - for use in high humidity environments or with protective eyewear.

CoolOne™ Tie Mask

BL 6001 Blue
300/case (6 boxes of 50)

BL 6001 CC Blue
Cleanroom Packaging
300/case (6 bags of 50)

CoolOne™ Ear Loop Mask

BL 6055 Blue
GR 6055 Green
PK 6055 Pink
YL 6055 Yellow
500/case (10 boxes of 50)

CoolOne™ Anti-fog Ear Loop Mask

BL 6155 Blue
500/case (10 boxes of 50)



Comfortable Performance

Critical Cover® CoolOne™ Facemasks

For Sensitive Skin

Features & Benefits: If you have skin sensitivity, choose the CoolOne Sensitive Skin facemask. These facemasks are hypoallergenic and free of pigments and dyes. The patented Magic Arch® support strip holds the mask away from the nose and mouth to create a larger breathing chamber to enhance user comfort. For a secure and comfortable fit, soft knit ear loops are available along with an anti-fog version for use in high humidity environments or with protective eyewear.



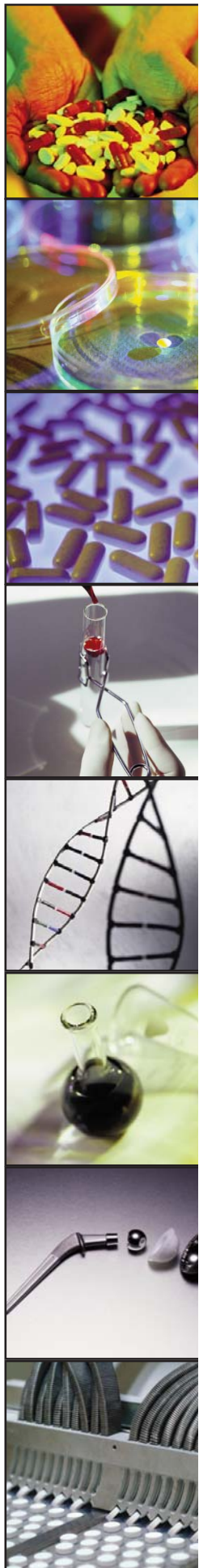
Hypoallergenic

CoolOne™ Sensitive Skin Ear Loop Mask

WH 1155 White
500/case (10 boxes of 50)

CoolOne™ Sensitive Skin Anti-fog Ear Loop Mask

WH 6155 White
500/case (10 boxes of 50)



Facemasks

Critical Cover® ShieldMate® Facemask w/Eye Shield

Dual Protective Performance

Features & Benefits: Get both eye and face splash protection along with particulate filtration efficiency in this truly unique design. The ShieldMate®, a combination facemask and eye shield, features a low glare, anti-fog coated, optically clear shield that is ultrasonically welded to the facemask.

Additionally, an anti-fog foam strip on the top of the facemask significantly reduces the potential for eyewear fogging. The patented Magic Arch® support strip holds the mask away from the nose and mouth creating a larger breathing chamber to enhance user comfort. This results in a cooler, more comfortable performance for the wearer. Comfortable tie strings and a full-length aluminum nose-piece properly secure the ShieldMate facemask to the user.

ShieldMate® Mask with Eye Shield Tie Mask

BL 8101 S Blue
100/case (4 boxes of 25)



Anti-fogging

Critical Cover® Combo® Facemask w/Shield

Optically Clear, Removable Shield

Features & Benefits: The Combo® facemask and face shield is hypoallergenic with an optically clear shield. The face shield is attached to the mask with snaps so that it can be easily removed where applicable. The face shield is 7 millimeters thick with an anti-fog coating, low glare and is distortion free.

Combo® w/Shield Ear Loop Mask

5194-E Blue
100/case (4 boxes of 25)



Removable Shield

Facemasks

Critical Cover® AlphaAir® Facemasks

Particle Filtration to 0.1 Micron

Features & Benefits: The high value AlphaAir® facemasks are clean, comfortable and provide outstanding particle filtration down to 0.1 micron. The full-length aluminum nosepiece helps provide a perfect fit every time. The sonic welded design ensures maximum protection for the user. The AlphaAir® is available with either ear loops or tie strings.



Economical

AlphaAir® Ear Loop Masks

| | |
|---------------------------|--------|
| BL 5005 | Blue |
| GR 5005 | Green |
| PK 5005 | Pink |
| YL 5005 | Yellow |
| 500/case (10 boxes of 50) | |

AlphaAir® Tie Mask

| | |
|--------------------------|------|
| BL 5100 | Blue |
| 300/case (6 boxes of 50) | |

Critical Cover® Microbreathe™ Facemask

Designed for Cleanroom Use

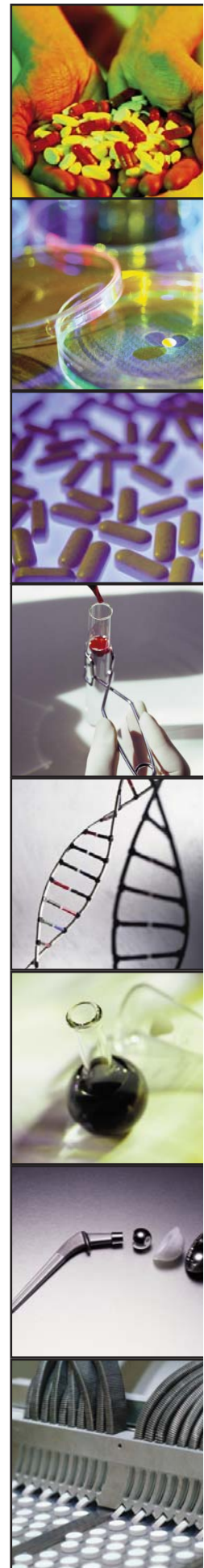
Features & Benefits: The interior of this 3-ply facemask is made of a soft, lightweight thermal bond material that provides the user with a comfortable fit. The hypoallergenic design provides high filtration efficiency while remaining a very breathable facemask. The facemask uses soft, non-latex elastic ear loops that are ultrasonically welded on the sides.

Microbreathe™ Ear Loop Mask

| | |
|--------------------------|-------|
| 9010 | White |
| Cleanroom packaging | |
| 500/case (10 bags of 50) | |



High Filtration



Facemasks

Critical Cover® AlphaGuard® Facemask

Suitable for Use in Controlled Environments



Comfort & Protection

Features & Benefits: For superior comfort and protection, the hypoallergenic AlphaGuard facemask exhibits an excellent water vapor transmission rate and particle filtration down to 0.1 micron. This 3-ply facemask has soft, latex-free, non-irritating knit ear loops that are ultrasonically welded to the mask.

AlphaGuard® Ear Loop Mask

9050 Blue

Cleanroom packaging

500/case (10 bags of 50)

Critical Cover® MVT Facemask

Highly Breathable

Features & Benefits: This hypoallergenic MVT highly breathable facemask is comfortable to wear while providing limited filtration efficiency. The soft inner facing provides for all-day comfort and the ultrasonic weld design yields a complete facial seal every time. Available with comfortable, soft, latex-free knit ear loops or polyethylene tie strings.

MVT Tie Mask

9240 White

Cleanroom packaging

500/case (10 bags of 50)

MVT Ear Loop Mask

9040 White

Cleanroom packaging

500/case (10 bags of 50)



All-Day Comfort

Face Veil & Face Shields

Critical Cover® Comfort™ Veil

Designed Especially for Users with



Extra Long

Features & Benefits: To help wearers with sensitive skin, the Comfort™ veil is made from a soft, nonwoven, hypoallergenic material. The veil is (15") long to provide freedom of movement and better protection while employing a latex-free, elastic Comfort headband. An integrated malleable nose strip is ultrasonically welded into the fabric to provide a good seal every time.

Comfort™ Veil

9400 White

150/case

Critical Cover® Coverall® Face Shields

Splash Protection

Features and Benefits: When you need total facial splash protection, choose the Coverall® face shield. The face shield's wrap-around design provides the wearer with great peripheral vision while acting as a protective shield against non-hazardous liquid splash and light particles in a Lab or Controlled Environment. The Coverall® face shield is not ANSI Z87 rated for eye protection. You can wear the lightweight shield comfortably for long periods and it fits easily over prescription glasses or protective eyewear. A double-sided anti-fog coating reduces the possibility of fogging in high humidity environments. For safe working conditions, the face shield is low distorting and 100% optically clear while a soft polyurethane foam headband securely positions the device on the wearer.

Available in two styles: Full face shield and half face shield. Also available with an adjustable Velcro® band or with our latex free elastic Comfort headband. Individually packaged.



Anti-fogging

Coverall® Full Face Shields

2802 Full Face Shield w/Velcro Adjustable Band

2807 Full Face Shield w/Comfort Band

100/case (4 boxes of 25)



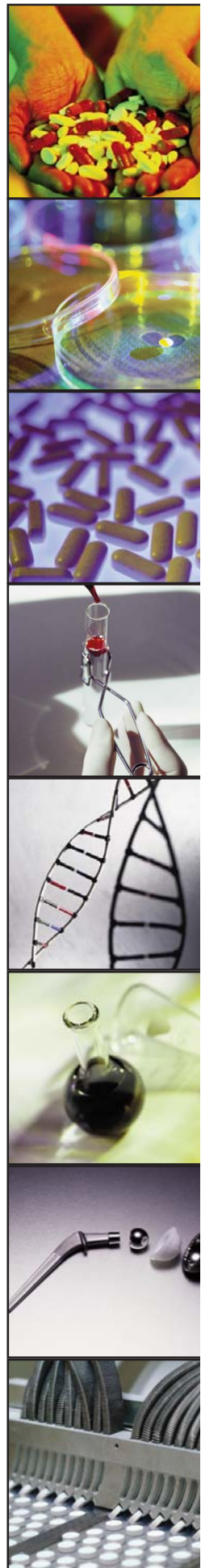
Anti-fogging

Coverall® Half Face Shields

2803 Half Face Shield w/Velcro Adjustable Band

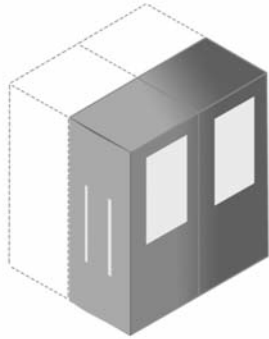
2808 Half Face Shield w/Comfort Band

100/case (4 boxes of 25)



Facemask Packaging

Dispenser Box Packaging



Dispenser Boxes



Dispenser boxes in carton



Carton tape sealed

Cleanroom Packaging



Masks in heat-sealed bag



Mask bags in carton liner
within carton



Carton tape sealed

Dimension Charts

Coveralls

| Dimensions | Size Code | Size | Body (A) | Chest (B) | Sleeve (C) | Leg (D) |
|------------|-----------|------|----------|-----------|------------|---------|
| | -1 | S | 36 ?" | 23 | 32 ?" | 28 |
| | -2 | M | 37 ?" | 24 ?" | 34" | 28 ?" |
| | -3 | L | 38 ?" | 25" | 34" | 29 ?" |
| | -4 | XL | 40" | 27" | 36 ?" | 30" |
| | -5 | 2X | 40 ?" | 29 ?" | 37" | 31" |
| | -6 | 3X | 43" | 32" | 38" | 32" |
| | -7 | 4X | 43" | 32 ?" | 41" | 32 ?" |
| | -8 | 5X | 43 ?" | 33 ?" | 42" | 33" |

Frocks

| Dimensions | Size Code | Size | Body (A) | Chest (B) | Sleeve (C) |
|------------|-----------|------|----------|-----------|------------|
| | -1 | S | 40 ?" | 21 ?" | 33 ?" |
| | -2 | M | 42 ?" | 22 ?" | 34 ?" |
| | -3 | L | 43 ?" | 23 ?" | 35 ?" |
| | -4 | XL | 46" | 24 ?" | 36 ?" |
| | -5 | 2X | 47 ?" | 26 ?" | 37 ?" |
| | -6 | 3X | 51 ?" | 29" | 40" |
| | -7 | 4X | 52 ?" | 29 ?" | 41" |
| | -8 | 5X | 53 ?" | 30" | 42" |

Lab Coats

| Dimensions | Size Code | Size | Body (A) | Chest (B) | Sleeve (C) |
|------------|-----------|------|----------|-----------|------------|
| | -1 | S | 36 ?" | 24 ?" | 30" |
| | -2 | M | 39 ?" | 25 ?" | 30 ?" |
| | -3 | L | 40" | 27" | 32 ?" |
| | -4 | XL | 42 ?" | 27 ?" | 33" |
| | -5 | 2X | 43 ?" | 29 ?" | 37 ?" |
| | -6 | 3X | 44 ?" | 30 ?" | 38 ?" |
| | -9 | 4X | 46 ?" | 31 ?" | 39 ?" |

Gowns

| Dimensions | Size Code | Size | Body (A) | Chest (B) | Sleeve (C) | Waist Tie Length (D) | Neck Tie Length (E) |
|------------|-----------|-------|----------|-----------|------------|----------------------|---------------------|
| | -2 | M | 41 ?" | 23" | 22 ?" | 29 ?" | 11" |
| | -3 | Univ. | 45" | 27" | 23" | 29 ?" | 11" |
| | -4 | XL | 47 ?" | 30" | 24 ?" | 29 ?" | 11" |

Scrub Shirts - Short & Long Sleeve

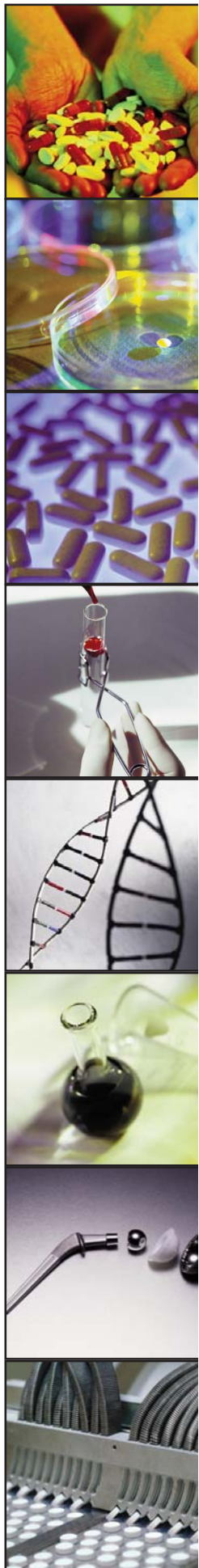
| Dimensions | Size Code | Size | Body (A) | Chest (B) | Short Sleeve (C) | Long Sleeve (C) | Shoulder (D) |
|------------|-----------|------|----------|-----------|------------------|-----------------|--------------|
| | -1 | S | 17 ?" | 22 ?" | 6 ?" | 20 ?" | 17" |
| | -2 | M | 17 ?" | 24 ?" | 6 ?" | 21 ?" | 18 ?" |
| | -3 | L | 18" | 26 ?" | 7 ?" | 22 ?" | 19 ?" |
| | -4 | XL | 18 ?" | 27 ?" | 7 ?" | 24 ?" | 20 ?" |
| | -5 | 2X | 18 ?" | 28 ?" | 8 ?" | 25 ?" | 22 ?" |
| | -6 | 3X | 19" | 30" | 9 ?" | 27" | 22 ?" |
| | -7 | 4X | 19 ?" | 31 ?" | 9 ?" | 28 ?" | 24 ?" |

Scrub Pants

| Dimensions | Size Code | Size | Leg (A) | Waist Relaxed (B) | Waist Stretched (B) |
|------------|-----------|------|---------|-------------------|---------------------|
| | -1 | S | 38" | 9 ?" | 16 ?" |
| | -2 | M | 40 ?" | 10 ?" | 18 ?" |
| | -3 | L | 43" | 12" | 21 ?" |
| | -4 | XL | 45" | 12" | 21 ?" |
| | -5 | 2X | 45" | 12 ?" | 23 ?" |
| | -6 | 3X | 46" | 14 ?" | 25 ?" |
| | -7 | 4X | 46 ?" | 14 ?" | 26" |

Sleeves

| Dimensions | Size Code | Size | Length (A) | Upper Arm Relaxed (B) | Upper Arm Stretched (B) | Wrist Relaxed (C) | Wrist Stretched (C) |
|------------|-----------|-------|------------|-----------------------|-------------------------|-------------------|---------------------|
| | -8 | Univ. | 19 ?" | 4 ?" | 9 ?" | 3 ?" | 5 ?" |
| | -4 | XL | 21 ?" | 5" | 10 ?" | 3 ?" | 6" |



Dimension Charts

Hoods

| Dimensions | Size | Height (A) | Top Width (B) | Face Opening Width (C) | Face Opening Length (D) | Tie Length (E) |
|------------|-------|------------|---------------|------------------------|-------------------------|----------------|
| | Univ. | 17 ?" | 7" | 9 ?" | 9 ?" | 17" |

Elastic Hoods

| Dimensions | Size | Height (A) | Width (B) | Depth (C) | Neck Stretched (D) | Neck Relaxed (D) | Face Stretched (E) | Face Relaxed (E) |
|------------|-------|------------|-----------|-----------|--------------------|------------------|--------------------|------------------|
| | Univ. | 10 ?" | 6" | 9 ?" | 13" | 5 ?" | 12 ?" | 5" |

Bouffants

| Dimensions | Size | Diameter Relaxed (A) | Diameter Stretched (A) |
|------------|------|----------------------|------------------------|
| | 21" | 8" | 21" |
| | 24" | 8 ?" | 24" |
| | 26" | 9" | 26" |

Beard Covers

| Dimensions | Size | Diameter Relaxed (A) | Diameter Stretched (A) | Headband Stretched (B) |
|------------|-------|----------------------|------------------------|------------------------|
| | Univ. | 6" | 10" | 18" |

UltraGrip™ Shoe Covers (page 28)

MaxGrip™ Shoe Covers (page 29)

| Dimensions | Size | Length (A) | Height (B) | Top Relaxed (C) | Top Stretched (C) | Sole Width (D) |
|------------|-------|------------|------------|-----------------|-------------------|----------------|
| | M | 11 ?" | 5" | 4" | 8 ?" | 4 ?" |
| | L | 12 ?" | 5" | 4 ?" | 9 ?" | 4 ?" |
| | Univ. | 14 ?" | 5" | 4 ?" | 11" | 4 ?" |
| | XL | 15" | 5 ?" | 5" | 11 ?" | 4 ?" |

UltraGrip™ Boot Covers w/Elastic Ankles (page 30)

| Dimensions | Size | Length (A) | Height (B) | Top Relaxed (C) | Top Stretched (C) | Ankle Relaxed (D) | Ankle Stretched (D) | Sole Width (E) |
|------------|-------|------------|------------|-----------------|-------------------|-------------------|---------------------|----------------|
| | M | 11 ?" | 17" | 5 ?" | 9" | 6" | 9 ?" | 4 ?" |
| | Univ. | 13 ?" | 17 ?" | 5 ?" | 9 ?" | 6 ?" | 11" | 4 ?" |
| | XL | 15" | 18" | 6" | 11 ?" | 6 ?" | 12 ?" | 4 ?" |

UltraGrip™ Boot Covers w/Ankle Ties (page 30)

| Dimensions | Size | Length (A) | Height (B) | Top Relaxed (C) | Top Stretched (C) | Tie Length (D) | Sole Width (E) |
|------------|-------|------------|------------|-----------------|-------------------|----------------|----------------|
| | M | 11 ?" | 18" | 4 ?" | 9" | 17" | 4 ?" |
| | Univ. | 14" | 18 ?" | 5 ?" | 9 ?" | 17" | 4 ?" |
| | XL | 15" | 19" | 5" | 11 ?" | 17" | 4 ?" |

Dimension Charts

**AquaTrak® Heat-sealed
Shoe Covers (page 31)**

| Dimensions | Size | Length (A) | Height (B) | Top Relaxed (C) | Top Stretched (C) |
|------------|-------|---------------|---------------|-----------------------|-------------------------|
| | Univ. | 15" | 7 ?" | 5" | 10 ?" |
| | XL | 17 ?" | 7 ?" | 6" | 11 ?" |

**AquaTrak® Serged Seam, Seamless Sole
Shoe Covers (page 31)**

| Dimensions | Size | Length (A) | Height (B) | Top Relaxed (C) | Top Stretched (C) |
|------------|-------|---------------|---------------|-----------------------|-------------------------|
| | Univ. | 15 ?" | 6 ?" | 4 ?" | 10 ?" |
| | XL | 17" | 7" | 5" | 11" |
| | 2X | 19" | 7 ?" | 5 ?" | 13" |

**AquaTrak® Sonic Welded,
Ankle High Boot Covers (page 32)**

| Dimensions | Size | Length (A) | Height (B) | Top Relaxed (C) | Top Stretched (C) | Ankle Ties (D) |
|------------|-------|---------------|---------------|-----------------------|-------------------------|----------------------|
| | Univ. | 15 ?" | 17" | 6" | 11 ?" | 17" |
| | XL | 16" | 18" | 6 ?" | 12 ?" | 17" |

**AquaTrak® Serged Seam,
Ankle High Boot Covers (page 32)**

| Dimensions | Size | Length (A) | Height (B) | Top Relaxed (C) | Top Stretched (C) |
|------------|-------|---------------|---------------|-----------------------|-------------------------|
| | Univ. | 15" | 11" | 5" | 9 ?" |
| | XL | 16 ?" | 11" | 5 ?" | 10 ?" |
| | 2X | 18 ?" | 11 ?" | 5 ?" | 11 ?" |

**SureGrip™ Serged Seam Shoe Covers
(page 33)**

| Dimensions | Size | Length (A) | Height (B) | Top Relaxed (C) | Top Stretched (C) |
|------------|-------|---------------|---------------|-----------------------|-------------------------|
| | Univ. | 15 ?" | 6 ?" | 4 ?" | 9 ?" |
| | XL | 17" | 6 ?" | 5" | 11 ?" |
| | 2X | 18 ?" | 6 ?" | 5 ?" | 12 ?" |

**SureGrip™ Conductive Shoe Covers
(page 33)**

| Dimensions | Size | Length (A) | Height (B) | Top Relaxed (C) | Top Stretched (C) |
|------------|-------|---------------|---------------|-----------------------|-------------------------|
| | Univ. | 15 ?" | 6 ?" | 4 ?" | 9 ?" |
| | XL | 17" | 6 ?" | 5" | 11 ?" |

**SureGrip™ Heat-sealed Shoe Covers
(page 34)**

| Dimensions | Size | Length (A) | Height (B) | Top Relaxed (C) | Top Stretched (C) |
|------------|------|---------------|---------------|-----------------------|-------------------------|
| | XL | 17 ?" | 7 ?" | 6" | 11 ?" |

**SureGrip™ Butterfly Style Shoe Covers
(page 34)**

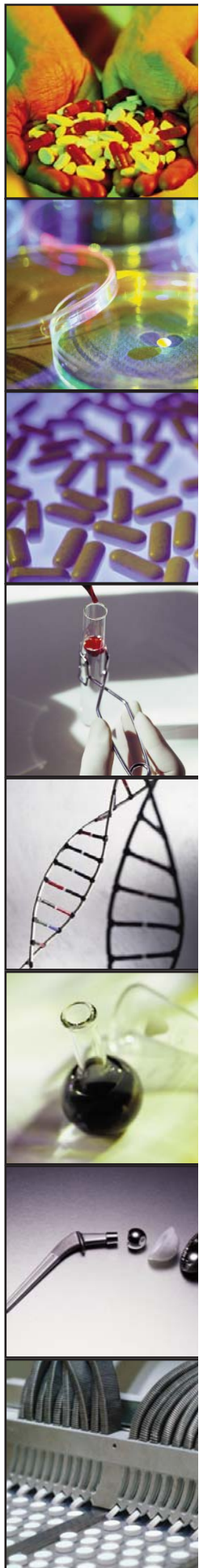
| Dimensions | Size | Length (A) | Height (B) | Top Relaxed (C) | Top Stretched (C) |
|------------|-------|---------------|---------------|-----------------------|-------------------------|
| | Univ. | 15 ?" | 6 ?" | 4 ?" | 10 ?" |
| | XL | 17" | 7" | 5" | 11" |
| | 2X | 19" | 7 ?" | 5 ?" | 13" |

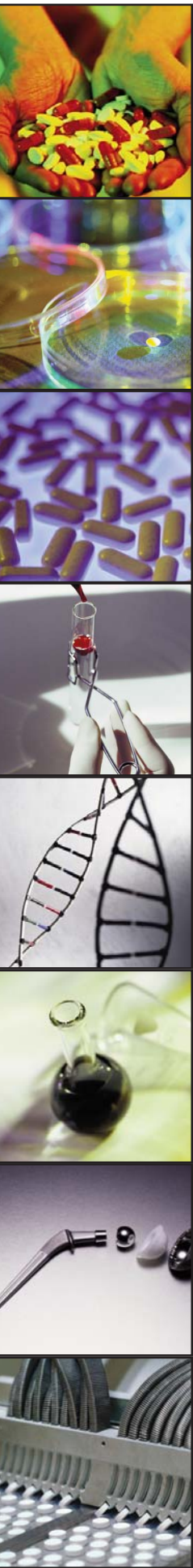
**GenPro® Serged Seam Shoe Covers
(page 35)**

| Dimensions | Size | Length (A) | Height (B) | Top Relaxed (C) | Top Stretched (C) |
|------------|-------|---------------|---------------|-----------------------|-------------------------|
| | Univ. | 15 ?" | 7 ⅞" | 4 ?" | 10 ?" |
| | XL | 17 ?" | 7" | 5" | 12" |

**GenPro® Serged Seam Boot Covers
(page 35)**

| Dimensions | Size | Length (A) | Height (B) | Top Relaxed (C) | Top Stretched (C) |
|------------|-------|---------------|---------------|-----------------------|-------------------------|
| | L | 13" | 20 ?" | 5 ?" | 12 ?" |
| | Univ. | 14 ?" | 21 ?" | 5 ?" | 12 ?" |
| | XL | 15 ?" | 22 ?" | 5 ?" | 12 ?" |





Seam Construction and Sizing Chart

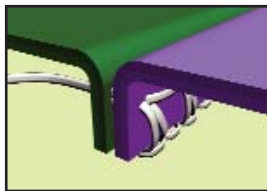
**CPE Heat-sealed Shoe Covers
(page 36)**

| Dimensions | Size | Length (A) | Height (B) | Top Relaxed (C) | Top Stretched (C) |
|------------|------|------------|------------|-----------------|-------------------|
| | XL | 16 1/8" | 5 7/8" | 3 7/8" | 16 1/8" |

**NaviTrak® Shoe Covers
(page 36)**

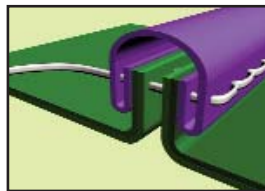
| Dimensions | Size | Length (A) | Height (B) | Top Relaxed (C) | Top Stretched (C) |
|------------|-------|------------|------------|-----------------|-------------------|
| | Univ. | 15" | 7 7/8" | 4 7/8" | 10 7/8" |
| | XL | 17" | 7 7/8" | 5" | 11 7/8" |

Seam Construction



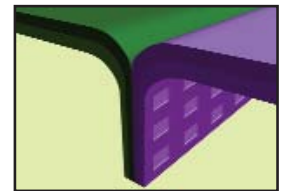
Serged Seam

Produced when threads are interlocked around the material edges for a strong, stress-resistant seam.



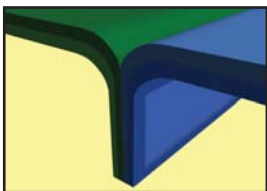
Bound Seam

Bound seams deliver added durability and strength, as well as reduce particulate shedding and provide extra protection against fluids.



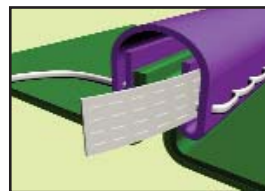
Ultrasonically Welded Seam

There are no thread or needle holes with this seam. The material is welded together creating a superior particle and fluid barrier.



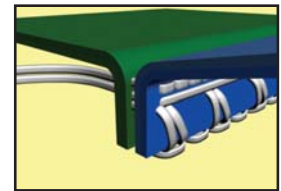
Heat-sealed Seam

This strong, impervious seam is used when ultrasonic welding is incompatible with the garment material.



Tunneled Elastic

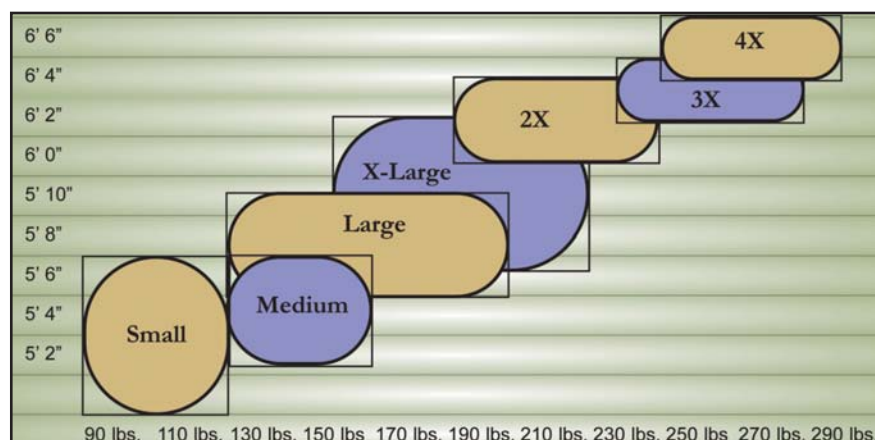
This design provides a secure closure for the garment and helps to limit particle and fluid contamination.



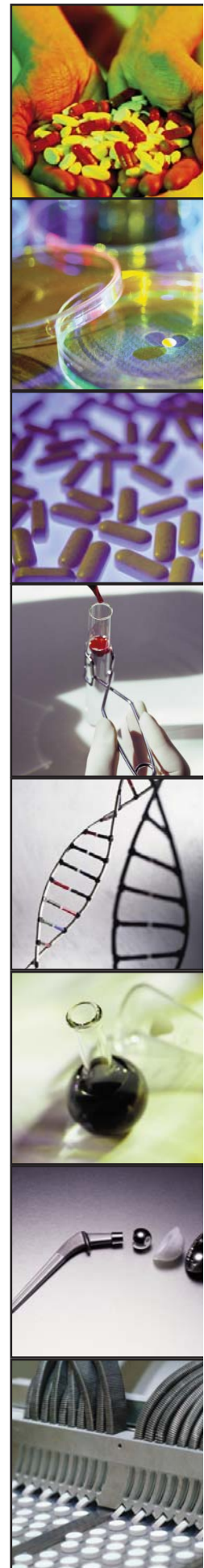
Safety Stitched Seam

An extra safety stitch is added above the serged seam to offer added strength, durability and protection.

Garment Sizing Chart



Please call for other sizing.



WARNING: These garments and associated materials are not suitable for use in some environments containing certain chemicals and/or hazardous agents. It is the responsibility of the user to determine the level of risk in a particular environment and the proper personal protection equipment needed. Garments manufactured from synthetic non-woven material may generate static electricity. Garments that contain an anti-stat treatment are not intended to be used as a safety feature. These garments are not recommended to be used in a flammable and/or explosive environment. If you have any questions, contact your distributor or Alpha Pro Tech for garment/fabric safety data. The use of this product is out of Alpha Pro Tech's control. Therefore, Alpha Pro Tech makes no warranties, expressed or implied, and assumes no liability as to the performance of these products for a particular use.

CAUTION: AVOID HEAT AND/OR OPEN FLAME.

UCC Limited Warranty and Exclusions

Limited Warranty; Disclaimer and Limitation of Remedies: The products shall be free from defects in material and workmanship. ALPHA PRO TECH HEREBY EXPRESSLY DISCLAIMS ALL WARRANTIES, EITHER EXPRESSED OR IMPLIED, INCLUDING ANY IMPLIED WARRANTY OF MERCHANTABILITY OR FITNESS FOR A PARTICULAR PURPOSE. Buyer's remedy is expressly limited to replacement of any defective product and Alpha Pro Tech shall have no responsibility for any incidental or consequential damages. Any claims under this warranty must be made in writing to Alpha Pro Tech and must be made with 90 days of the purchase. Alpha Pro Tech, Inc. reserves the right to change any prices, terms and conditions of sale at any time without any notice.

AlphaAir, AlphaGuard, AquaTrak, BarrierTech, ChemTech, Combo, Comfort, ComforTech, CoolOne, Coverall, Critical Cover, GenPro, Magic Arch, MaxGrip, Microbreathe, NaviTrak, PFL, Positive Facial Lock, ShieldMate, SureGrip, Twist-Seal, and UltraGrip are trademarks of Alpha Pro Tech, Inc.

Velcro is a trademark of Velcro Industries B.V.

**Alpha Pro Tech is committed to protecting people,
products, manufacturing and healthcare environments to
optimize process effectiveness and customer profitability.**

Ordering Information: To place an order, receive a sample or obtain more information,
please contact our Customer Service Department toll-free from
9:00 a.m. to 5:00 p.m. Eastern Time at:

Phone: 800-749-1363
Fax: 905-479-8703
E-mail: sales@alphaprotech.com

International Customer Service
and calls after 5:00 p.m. Eastern Time:

Phone: 520-281-0127 Ext. 201
Fax: 520-281-0235
E-mail: ccrespo@alphaprotech.com

Visit us at: www.alphaprotech.com

